

9-2009

## Working with External Data: Downloading from the Iowa DNR

Christopher J. Seeger

*Iowa State University*, [cjseeger@iastate.edu](mailto:cjseeger@iastate.edu)

Alan Jensen

*Iowa State University*

Follow this and additional works at: [http://lib.dr.iastate.edu/extension\\_pubs](http://lib.dr.iastate.edu/extension_pubs)

 Part of the [Architectural Technology Commons](#), [Landscape Architecture Commons](#), [Other Architecture Commons](#), and the [Urban, Community and Regional Planning Commons](#)

---

### Recommended Citation

Seeger, Christopher J. and Jensen, Alan, "Working with External Data: Downloading from the Iowa DNR" (2009). *Extension and Outreach Publications*. 202.

[http://lib.dr.iastate.edu/extension\\_pubs/202](http://lib.dr.iastate.edu/extension_pubs/202)

**Iowa State University Extension and Outreach publications in the Iowa State University Digital Repository are made available for historical purposes only. Users are hereby notified that the content may be inaccurate, out of date, incomplete and/or may not meet the needs and requirements of the user. Users should make their own assessment of the information and whether it is suitable for their intended purpose. For current publications and information from Iowa State University Extension and Outreach, please visit <http://www.extension.iastate.edu>.**

## Working with External Data: Downloading from the Iowa DNR

Welcome to the Essential ArcGIS Task Sheet Series. This series supplements the Iowa State University GIS Geospatial Technology Training Program short course series, "Essential ArcGIS Tutorial Series." The task sheets are designed to provide quick, easy instructions for performing specific tasks in GIS.

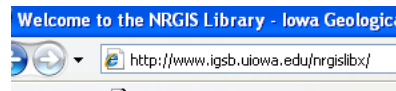
The Iowa Department of Natural Resources provides shapefile data from Iowa free to download. Data is available by theme at state and county levels at <http://www.igsb.uiowa.edu/nrgislibx/gishome.htm>

### 1. NRGIS Library

Open a web browser and visit the Iowa DNR GIS library at <http://www.igsb.uiowa.edu/nrgislibx/>

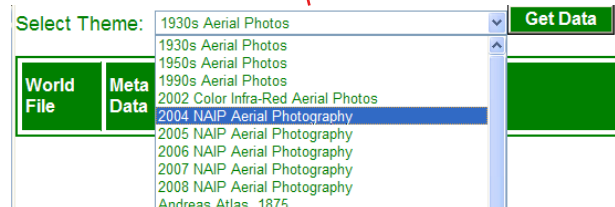
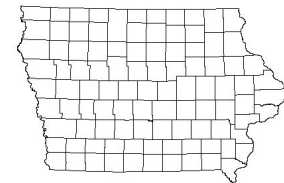
The table of contents on the left hand contains data at various levels and themes.

- To download county-wide data, select either **Data available by County** for a drop-down menu and map to find the desired county or select **Data available by Theme** to search the theme of the layer for all of the counties.



#### County-wide Data

- Data available by County
- Data available by Theme



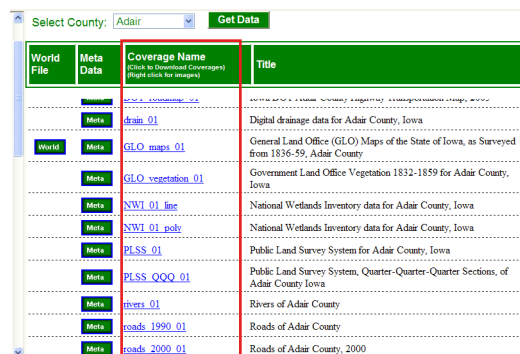
- To download state-wide data, select a theme below **State-wide Data** and the window will refresh with layers of the selected theme for the state of Iowa.

#### State-wide Data

- Administrative and Political Boundaries
- Agricultural
- Basins (watersheds)
- Biologic and Ecologic
  - Amphibians-Reptiles
  - Birds

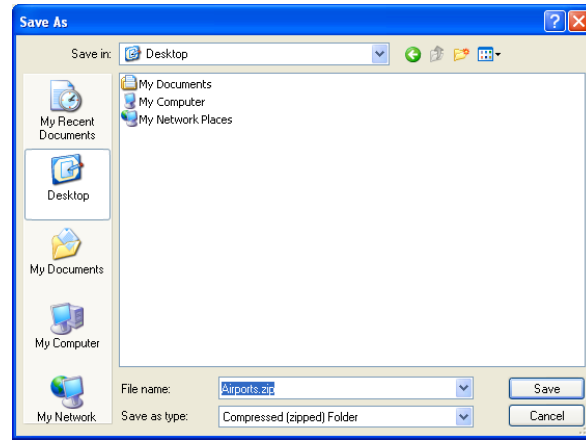
### 2. Downloading Data

- Click a **Coverage Name** once a theme is selected to download a layer.



Select to download

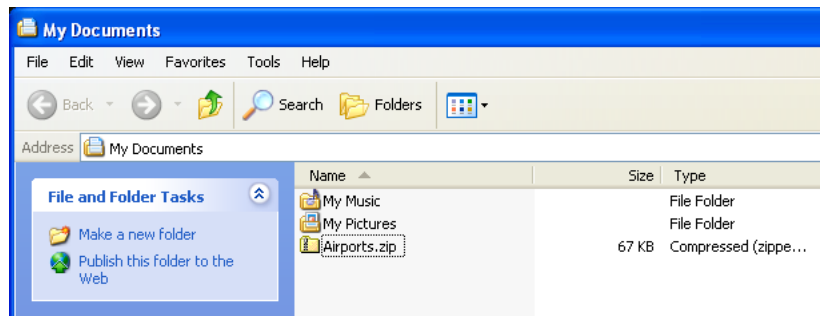
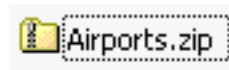
2. Save the file to a desired folder.



### 3. Extracting Layers

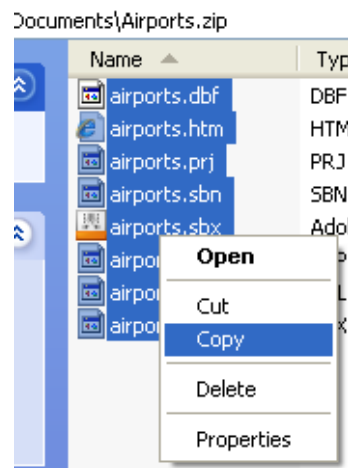
1. Shapefiles are downloaded in a compressed folder and have to be opened and copied to another directory or location before using in any GIS software.

- Locate the file in Windows Explorer.
- Double click on the file and explore its contents to follow the steps below or alternatively, right click the file and select **extract all...**



- Highlight each file.
- Right click and select **Copy**.
- Browse to a desired location, right click and select **Paste** in the new folder.

2. The data is now ready to be added to applications using shapefiles.



### Contacts

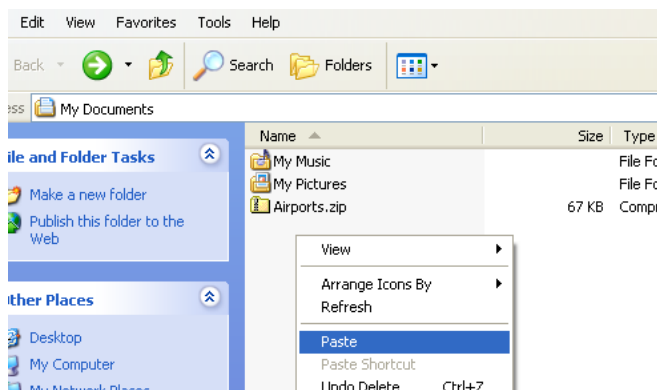
For more information about Geospatial technology, contact:

Christopher J. Seeger, ASLA, GISP  
cjseeger@iastate.edu or 515-294-3648.

For information about the ISU Extension Geospatial Technology Program, contact:

Alan Jensen, AICP  
adjensen@iastate.edu or 515-294-2073.

This task sheet and more are available for free download at [www.extension.iastate.edu/gis](http://www.extension.iastate.edu/gis).



... and justice for all  
The U.S. Department of Agriculture (USDA) prohibits discrimination in all its programs and activities on the basis of race, color, national origin, gender, religion, age, disability, political beliefs, sexual orientation, and marital or family status. (Not all prohibited bases apply to all programs.) Many materials can be made available in alternative formats for ADA clients. To file a complaint of discrimination, write USDA, Office of Civil Rights, Room 326-W, Whitten Building, 14th and Independence Avenue, SW, Washington, DC 20250-9410 or call 202-720-5964.

Issued in furtherance of Cooperative Extension work, Acts of May 8 and June 30, 1914 in cooperation with the U.S. Department of Agriculture. Jack M. Payne, director, Cooperative Extension Service, Iowa State University of Science and Technology, Ames, Iowa.