

2011

University Brief Enrollment to Graduation: Fall 2002–2011

Narren J. Brown

Iowa State University, brownnar@grinnell.edu

Craig A. Ogilvie

Iowa State University, cogilvie@iastate.edu

Follow this and additional works at: http://lib.dr.iastate.edu/grad_reports



Part of the [Educational Assessment, Evaluation, and Research Commons](#), and the [Higher Education Commons](#)

Recommended Citation

Brown, Narren J. and Ogilvie, Craig A., "University Brief Enrollment to Graduation: Fall 2002–2011" (2011). *Graduate College Reports*. 9.

http://lib.dr.iastate.edu/grad_reports/9

This Report is brought to you for free and open access by the Graduate College at Iowa State University Digital Repository. It has been accepted for inclusion in Graduate College Reports by an authorized administrator of Iowa State University Digital Repository. For more information, please contact digirep@iastate.edu.

University Brief Enrollment to Graduation: Fall 2002–2011

Abstract

Iowa State University fall graduate enrollment was 3706 in the fall of 2002 and increased to 4125 by fall 2011.

Disciplines

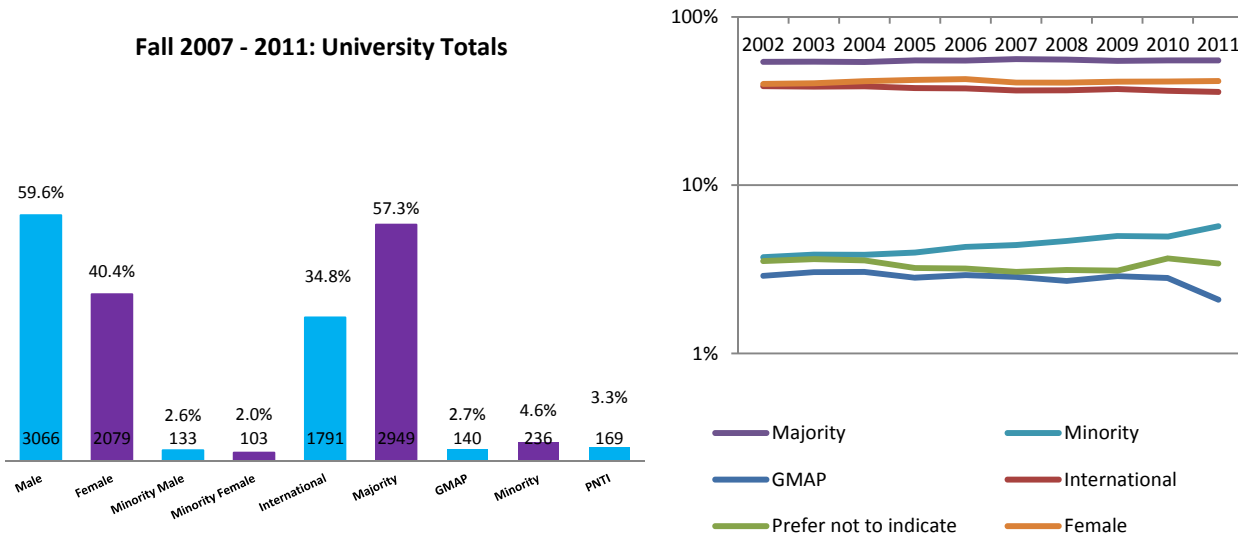
Educational Assessment, Evaluation, and Research | Higher Education

University Brief Enrollment to Graduation: Fall 2002-2011: Narren Brown, Craig Ogilvie

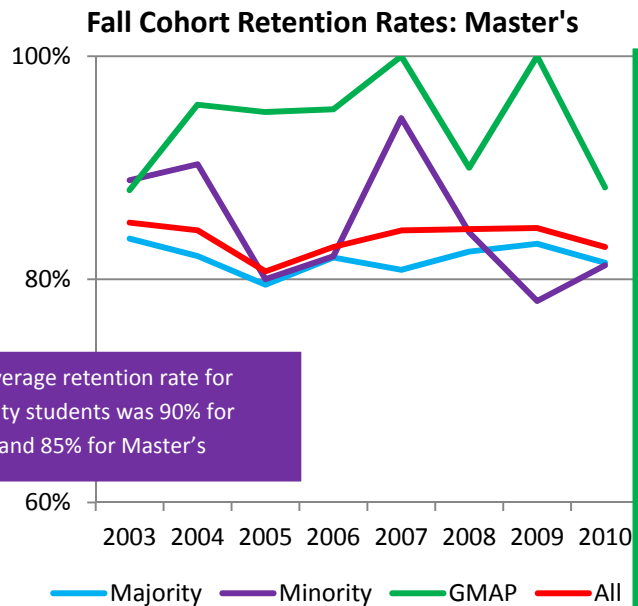
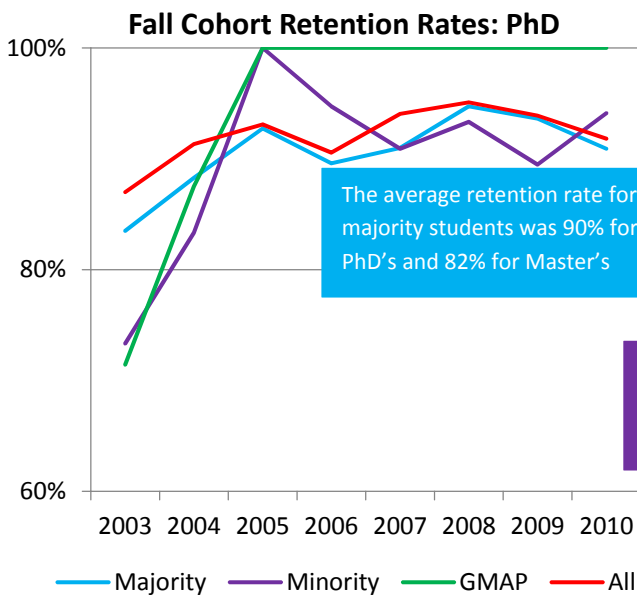
Iowa State University fall graduate enrollment was 3706 in the fall of 2002 and increased to 4125 by fall 2011.

- Over the 10 years, 51% of these graduate students were STEM students and more than 2/3 of all STEM students were male. The remaining 49% were LEAF (Non-STEM) graduate students and contrary to the STEM student population the majority of LEAF students (53%) were female.
- Nearly a 1/3 of Iowa State University's graduate population is comprised of international students. Less than 5% of the students are US ethnic minorities.
- From fall 2002 to fall 2011 Iowa State University's proportion of minority graduate student population increased significantly, from 138 graduate minority students in the fall of 2002 to 235 in the fall of 2011. Representing a 60% increase.
- However, the % of students receiving GMAP funding remained relatively flat hovering around three percent (3%).

Fall 2007 - 2011: University Totals

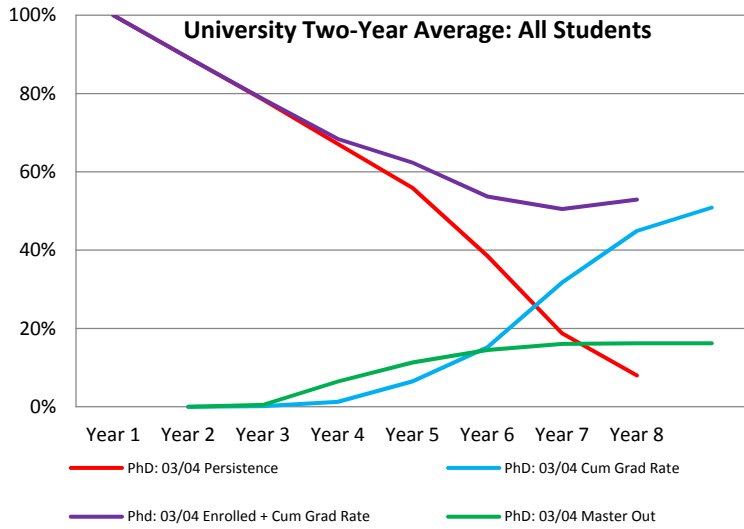


We define 1st-year retention as those students who return for a 2nd year. Both the PhD and Master's fall cohorts' retention rates (shown in the graphs below) were high, with retention rates of 92 and 84 percent, respectively. It is not clear why the retention rates were lower for the 2003 cohort. There may also be a worrying, recent decrease in retention for both minority PhD and Master's students (purple lines).



The average retention rate for GMAP Students' exceeded that of Minority Students for both PhD and Master's averaging 94% retention for both groups.

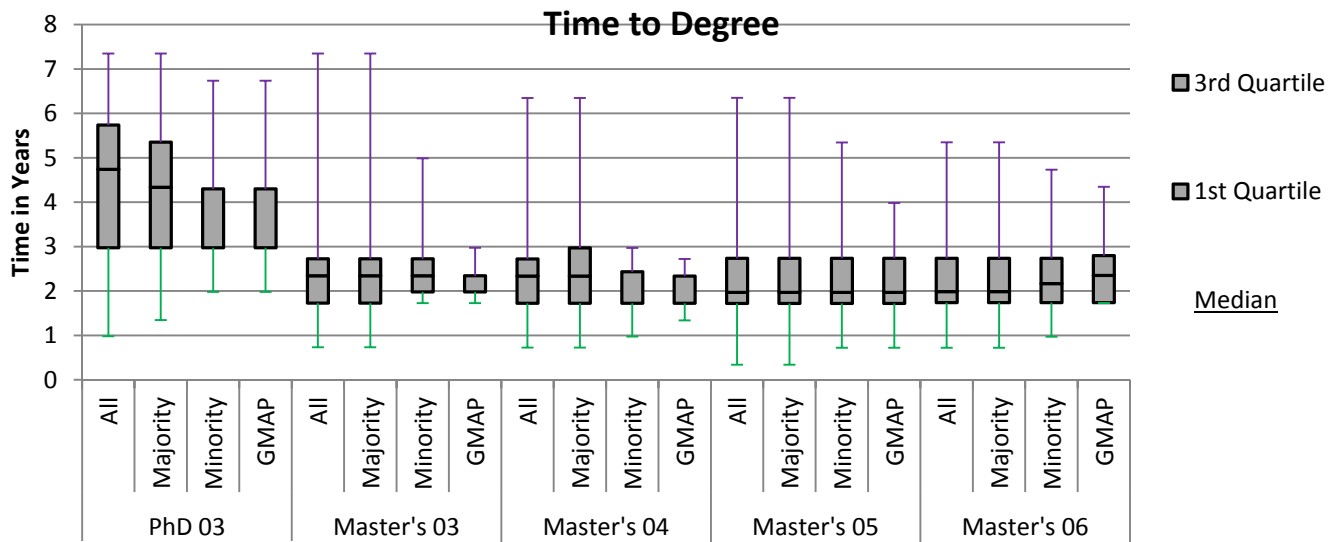
To show the path of PhD students towards their degree, we combined the data for both the 03/04 & 04/05 entering cohorts.



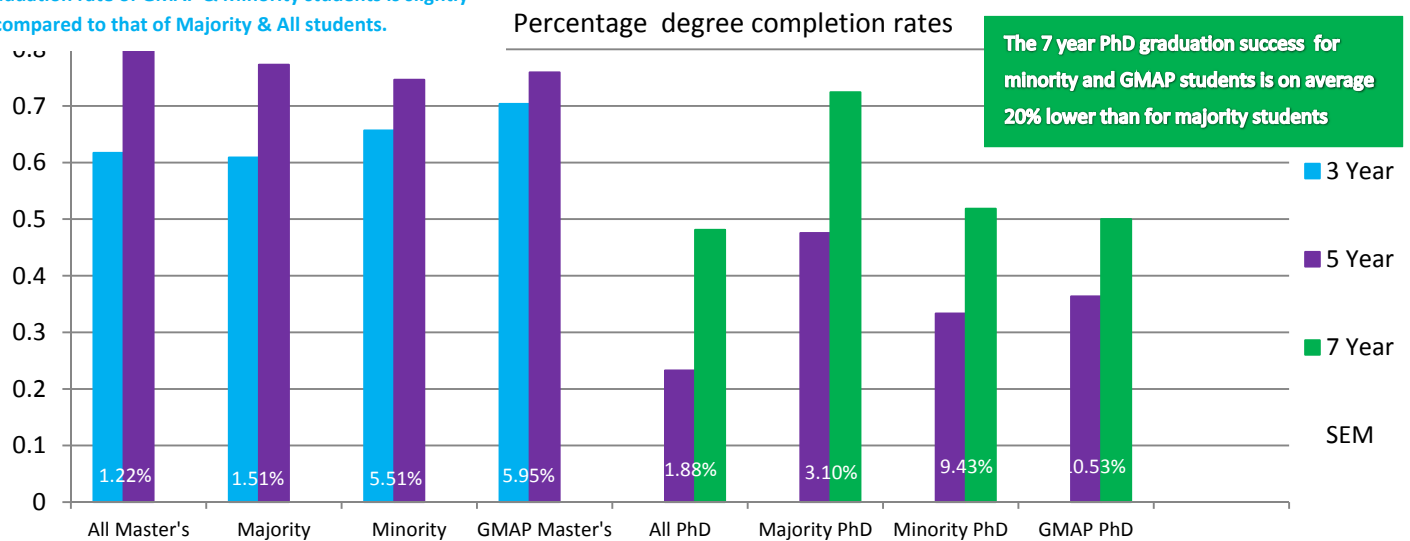
By year eight fifty percent of ISU's PhD students graduated with a PhD.

Nearly twenty percent of ISU's PhD students Master Out.

10% of the students are still enrolled. Another approximately 20% of PhD students do not obtain a degree.



On average, the 3 and 5 year master's graduation success for different ethnic groups are roughly even. Except the three year graduation rate of GMAP & Minority students is slightly higher compared to that of Majority & All students.



The 7 year PhD graduation success for minority and GMAP students is on average 20% lower than for majority students

Weighted averages for fall 03, 04 & 05 cohorts.