

6-5-2013

SCN Females Already Seen on Soybean Roots

Gregory L. Tylka

Iowa State University, gltylka@iastate.edu

Follow this and additional works at: <http://lib.dr.iastate.edu/cropnews>



Part of the [Agricultural Science Commons](#), [Agriculture Commons](#), and the [Plant Pathology Commons](#)

Recommended Citation

Tylka, Gregory L., "SCN Females Already Seen on Soybean Roots" (2013). *Integrated Crop Management News*. 100.
<http://lib.dr.iastate.edu/cropnews/100>

The Iowa State University Digital Repository provides access to Integrated Crop Management News for historical purposes only. Users are hereby notified that the content may be inaccurate, out of date, incomplete and/or may not meet the needs and requirements of the user. Users should make their own assessment of the information and whether it is suitable for their intended purpose. For current information on integrated crop management from Iowa State University Extension and Outreach, please visit <https://crops.extension.iastate.edu/>.

SCN Females Already Seen on Soybean Roots

Abstract

The soybean cyst nematode (SCN) is one of the most damaging pests of soybean in Iowa and the Midwest. SCN can cause foliar symptoms of soybean sudden death syndrome (SDS) to occur earlier in the season and to become more severe, leading to increased yield losses from the disease.

Keywords

Plant Pathology and Microbiology

Disciplines

Agricultural Science | Agriculture | Plant Pathology

search

Subscribe to Crop News

Archives

2014

2013

2012

2011

2010

2009

2008

Previous Years

ISU Crop Resources

Extension Field Agronomists

Crop & Soils Info

Pesticide Applicator Training

Agronomy Extension

Entomology Extension

Plant Pathology Extension

Ag and Biosystems Engineering Extension

Agribusiness Education Program

Iowa Grain Quality Initiative

College of Agriculture and Life Sciences

ISU Extension

Integrated Crop Management NEWS

- PRINT STORY
- EMAIL STORY
- ADD TO DELICIOUS
- ATOM FEED
- FOLLOW ON TWITTER

SCN Females Already Seen on Soybean Roots

By Greg Tylka, Department of Pathology and Microbiology

The soybean cyst nematode (SCN) is one of the most damaging pests of soybean in Iowa and the Midwest. SCN can cause foliar symptoms of soybean sudden death syndrome (SDS) to occur earlier in the season and to become more severe, leading to increased yield losses from the disease.

SCN females on roots marks end of first generation

The appearance of SCN females on the roots of soybean plants usually occurs five or six weeks after planting in Iowa and represents completion of the first of multiple generations of the nematode in a growing season.

On Sunday, June 2, Tom Hillyer of Hillyer AgriServices in West Liberty, Iowa, observed emerging SCN females (see figure) on roots of susceptible soybeans that were planted on May 8. These soybeans were only in the V2 stage of development when the SCN females were observed.

Increased early SCN activity troublesome

It is unusual for SCN females to be evident on soybean roots so early in the growing season. Increased early activity of SCN is problematic because yield loss from SCN is directly related to their population densities in the soil, and SCN numbers may increase more if the generation time is shortened because more generations can occur in a growing season.

It has been reported that the wet spring weather may have resulted in an increase in the root rot phase of SDS for soybeans that were planted already this year (see [June 4 ICM News article](#)). The early appearance of SCN females on soybean roots, indicating increased early season SCN activity, also may increase the risk of severe symptoms of the foliar phase of SDS later this growing season.

Manage SCN for direct and possible indirect benefits

Managing SCN will reduce yield loss by lessening direct damage from the nematode and indirectly by possibly lessening the effect of SCN on SDS foliar symptoms. Management options for SCN include use of resistant soybean varieties and nematode-protectant seed treatments and growing nonhost crops such as corn in a rotation with soybeans.

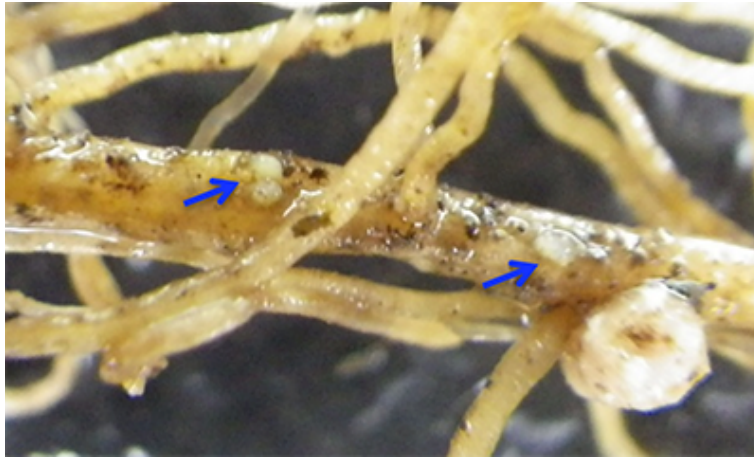


Figure 1. Emerging soybean cyst nematode females (blue arrows) on susceptible soybean roots planted 26 days earlier. (Photo by Tom Hillyer)

Greg Tylka is a professor with extension and research responsibilities in management of plant-parasitic nematodes in the Department of Plant Pathology and Microbiology at Iowa State University. He can be reached at gtylka@iastate.edu or 515-294-3021.

This article was published originally on 6/5/2013. The information contained within the article may or may not be up to date depending on when you are accessing the information.

Links to this material are strongly encouraged. This article may be republished without further permission if it is published as written and includes credit to the author, Integrated Crop Management News and Iowa State University Extension. Prior permission from the author is required if this article is republished in any other manner.