

10-2009

ArcMap Geoprocessing: Creating Buffers and Erasing Features with ArcToolbox

Christopher J. Seeger

Iowa State University, cjseeger@iastate.edu

Alan Jensen

Iowa State University

Follow this and additional works at: http://lib.dr.iastate.edu/extension_pubs

 Part of the [Architectural Technology Commons](#), [Landscape Architecture Commons](#), [Other Architecture Commons](#), and the [Urban, Community and Regional Planning Commons](#)

Recommended Citation

Seeger, Christopher J. and Jensen, Alan, "ArcMap Geoprocessing: Creating Buffers and Erasing Features with ArcToolbox" (2009). *Extension and Outreach Publications*. 204.

http://lib.dr.iastate.edu/extension_pubs/204

Iowa State University Extension and Outreach publications in the Iowa State University Digital Repository are made available for historical purposes only. Users are hereby notified that the content may be inaccurate, out of date, incomplete and/or may not meet the needs and requirements of the user. Users should make their own assessment of the information and whether it is suitable for their intended purpose. For current publications and information from Iowa State University Extension and Outreach, please visit <http://www.extension.iastate.edu>.

ArcMap Geoprocessing: Creating Buffers and Erasing Features with ArcToolbox

Welcome to the Essential ArcGIS Task Sheet Series. This series supplements the Iowa State University GIS Geospatial Technology Training Program short course series, "Essential ArcGIS Tutorial Series." The task sheets are designed to provide quick, easy instructions for performing specific tasks in GIS.

Geoprocessing is a GIS operation that automates many data transformation tasks. A buffer creates a new spatial representation of a point, line or polygon that encloses the feature at a specified distance. The erase tool removes parts of features from other features. To use data from this task sheet, visit the NRGIS website and follow these links: under **State-wide Data** click **Administrative and Political Boundaries > Iowa_border**, and under **State-wide Data** click **Reaction > Trails**. For more information on the NRGIS website, consult task sheet **PM2082-09q** regarding Downloading from the Iowa DNR.

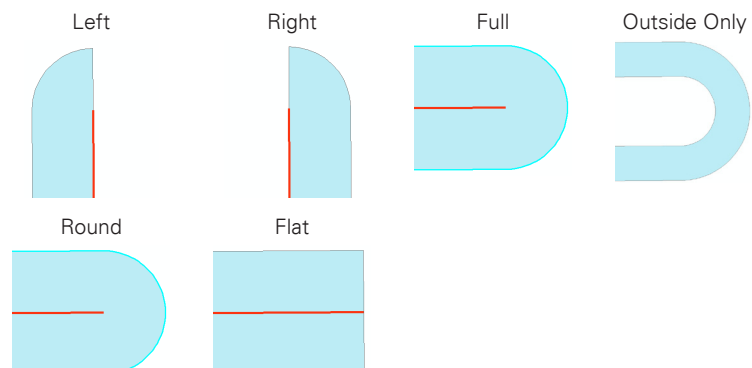
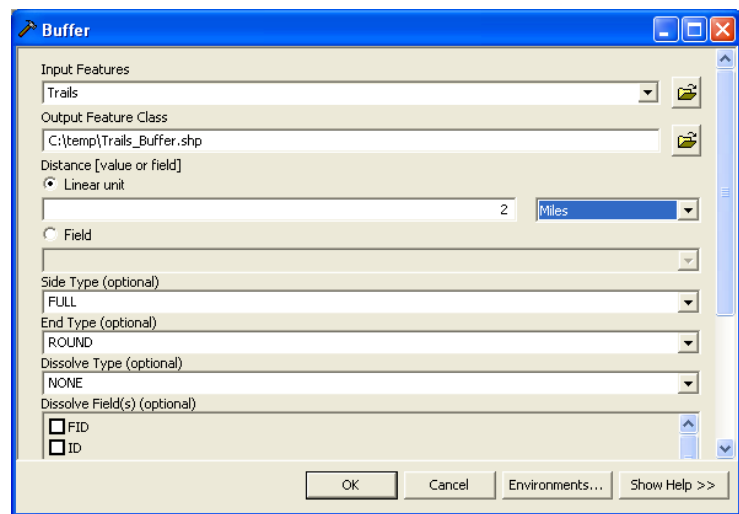
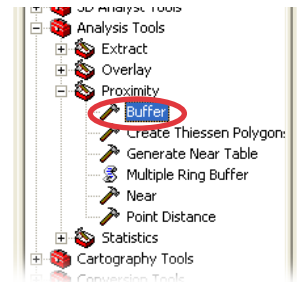
1. Open ArcMap

1. Open the **Trails** and **Iowa_border** shapefile.

2. Buffering

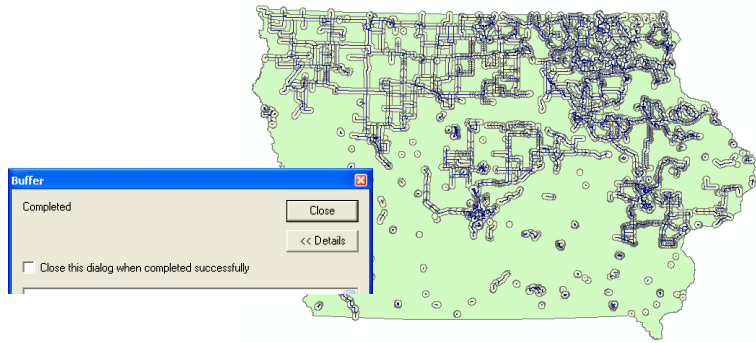
1. Click **Show/Hide ArcToolbox Window**.
2. Expand **Analysis Tools > Proximity** and double click **Buffer**.
3. Fill out the following fields:

- Under **Input Features**, select **Trails**.
- Select a destination to save the new shapefile by selecting the folder icon under **Output Feature Class**.
- Select **Linear unit** and in the box below type **2**, and select **Miles** in the drop-down menu beside the box. To buffer features of only a select attribute, click the radial button next to **Field** and select the attribute from the drop-down menu.
- From the **Dissolve Type (optional)** drop-down menu, the options are **None** (will not dissolve the buffers), **All** (each buffer will be merged into one feature), and **List** (merges buffers that have the same attributes that are selected in the **Dissolve Field(s) (optional)** window). Select **None**.
- **Slide Type (optional)** (ArcInfo license only) will create a buffer for the following options: **FULL** (on all sides), **LEFT** (left of the line), **RIGHT** (right of the line), **OUTSIDE_ONLY** (creates a buffer of the input feature, but excludes that feature's coverage in the output buffer polygon).



- **End Type (optional)** (ArcInfo license only) creates a buffer shape at the end of a line as a **FLAT** (square) or **ROUND** (half circle).

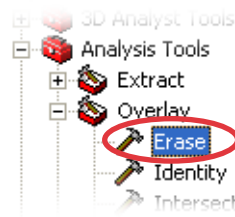
4. Click **OK** in the **Buffer** window.
5. Click **Close** in the **Buffer** window that appears after the process has completed.
6. Each feature from the **Trails** layer will have a buffer surrounding it.



3. Erase Tool (ArcInfo license only)

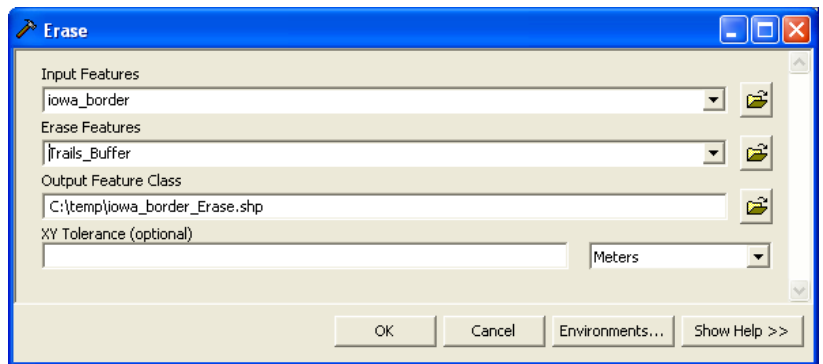
For those using the ArcEditor or ArcView license, the erase function is not available. A remedy to this is to use the **ET GeoWizard** add-on in ArcMap. For more information on that tool, see task sheet **PM2082-09q** regarding **Downloading and Exploring ET GeoWizards**.

2. Under the ArcToolbox, expand **Analysis Tools > Overlay** and double click **Erase**.



3. Fill out the following fields:

- Under **Input Features**, click the drop-down menu and select **iowa_border**.
- Under **Erase Features**, select the drop-down menu and select **Trails_Buffer**.
- Select a destination to save the new shapefile by selecting the folder icon under **Output Feature Class**.
- Click **OK**.



4. Click **Close** in the **Erase** window that appears when its process has completed.
5. Turn off the **Trails_Buffer** and **iowa_border** layers from the **Table of Contents**. The **Trails_Buffer** layer will be removed from the **iowa_border** layer.

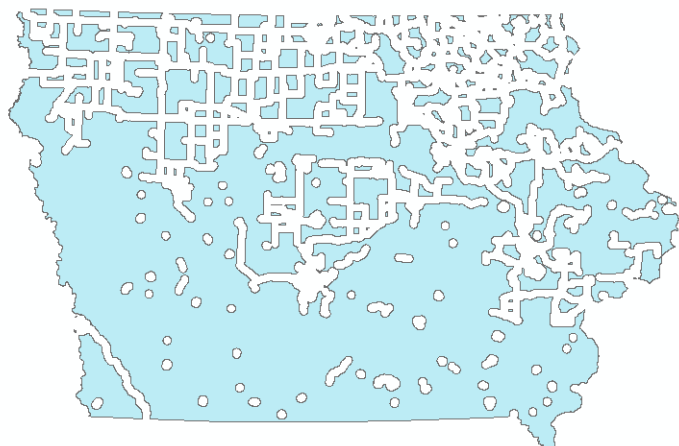
Contacts

For more information about ArcMap Geoprocessing, contact:

Christopher J. Seeger, ASLA, GISP
cjseeger@iastate.edu or 515-294-3648.

For information about the ISU Extension Geospatial Technology Program, contact:

Alan Jensen, AICP
adjensen@iastate.edu or 515-294-2073.



This task sheet and more are available for free download at www.extension.iastate.edu/gis.

... and justice for all

The U.S. Department of Agriculture (USDA) prohibits discrimination in all its programs and activities on the basis of race, color, national origin, gender, religion, age, disability, political beliefs, sexual orientation, and marital or family status. (Not all prohibited bases apply to all programs.) Many materials can be made available in alternative formats for ADA clients. To file a complaint of discrimination, write USDA, Office of Civil Rights, Room 326-W, Whitten Building, 14th and Independence Avenue, SW, Washington, DC 20250-9410 or call 202-720-5964.

Issued in furtherance of Cooperative Extension work, Acts of May 8 and June 30, 1914 in cooperation with the U.S. Department of Agriculture. Jack M. Payne, director, Cooperative Extension Service, Iowa State University of Science and Technology, Ames, Iowa.