

1993

# Rapid Communication: A MspI Restriction Fragment Length Polymorphism at the Swine PIT-1 Locus

T. P. Yu

*Iowa State University*

Max F. Rothschild

*Iowa State University, mfrothsc@iastate.edu*

Christopher K. Tuggle

*Iowa State University, cktuggle@iastate.edu*

Follow this and additional works at: [http://lib.dr.iastate.edu/ans\\_pubs](http://lib.dr.iastate.edu/ans_pubs)

 Part of the [Agriculture Commons](#), [Animal Sciences Commons](#), and the [Genetics and Genomics Commons](#)

The complete bibliographic information for this item can be found at [http://lib.dr.iastate.edu/ans\\_pubs/290](http://lib.dr.iastate.edu/ans_pubs/290). For information on how to cite this item, please visit <http://lib.dr.iastate.edu/howtocite.html>.

---

This Article is brought to you for free and open access by the Animal Science at Iowa State University Digital Repository. It has been accepted for inclusion in Animal Science Publications by an authorized administrator of Iowa State University Digital Repository. For more information, please contact [digirep@iastate.edu](mailto:digirep@iastate.edu).

---

# Rapid Communication: A MspI Restriction Fragment Length Polymorphism at the Swine PIT-1 Locus

## **Abstract**

Name of Marker. Swine PIT-1\*2. Source and Description of Clone. Probe used in RFLP analysis was a cDNA fragment encoding the swine PIT-1 POU-domain region (Tuggle et al., 1993). The 311-bp probe was isolated from the vector pCR1000 using EcoRI and HindIII.

## **Keywords**

Pigs, Growth Hormone, RFLP, Genetic Markers

## **Disciplines**

Agriculture | Animal Sciences | Genetics and Genomics

## **Comments**

This is an article from *Journal of Animal Science* 71 (1993): 2275, doi:/1993.7182275x. Posted with permission.

# Rapid Communication: A *MspI* Restriction Fragment Length Polymorphism at the Swine *PIT-1* Locus<sup>1</sup>

T.-P. Yu, M. F. Rothschild, and C. K. Tuggle<sup>2</sup>

Department of Animal Science, Iowa State University, Ames 50011-3150

*Name of Marker.* Swine PIT-1\*2.

*Source and Description of Clone.* Probe used in RFLP analysis was a cDNA fragment encoding the swine PIT-1 POU-domain region (Tuggle et al., 1993). The 311-bp probe was isolated from the vector pCR1000 using *EcoRI* and *HindIII*.

*Method of Detection.* DNA was isolated from whole blood, digested with *MspI*, and transferred to charged nylon membranes. Hybridizations were at 65°C for 20 to 22 h in .5 M NaCl, .05 M Na-phosphate buffer, pH 6.5, 5 × Denhardt's reagent, 10% dextran sulfate, 1% SDS, and 50 µg/mL of sonicated, denatured salmon sperm DNA. Final washes were at 65°C with .5× SSC, .1% SDS for 10 to 15 min.

*Description of Polymorphism.* Two fragments are observed with this probe/enzyme combination (See Figure 1). Both 4.5-kb and 3.75-kb fragments are polymorphic. Swine *PIT-1* is not polymorphic in 21 unrelated animals using *TaqI*.

*Inheritance Pattern.* Autosomal Mendelian segregation of the 4.5- and 3.75-kb bands was observed in 39 animals in nine families.

*Frequency.* The frequency of the alleles in 73 unrelated pigs from eight breeds was .21 for the 4.5-kb allele and .79 for the 3.75-kb allele (Table 1).

*Chromosomal Location.* Not determined.

*Probe Availability.* Probe is available from C. K. Tuggle (Tuggle et al., 1993).

*Comments.* PIT-1 has been shown to control growth hormone and prolactin synthesis in the mammalian pituitary (Ingraham et al., 1990). Restriction fragment length polymorphisms in both mice and humans are associated with dwarf stature and hypopituitarism (Ingraham et al., 1990; Radovick et al., 1992). The authors thank R. G. Larson for providing swine DNA.

## Literature Cited

- Ingraham, H. A., V. R. Albert, R. Chen, E. B. Crenshaw, III, H. P. Elsholtz, X. He, M. S. Kapiloff, H. J. Mangalam, L. W. Sawanson, M. N. Treacy, and M. G. Rosenfeld. 1990. A family of POU-domain and PIT-1 tissue-specific transcription factors in pituitary and neuroendocrine development. *Annu. Rev. Physiol.* 52: 779.
- Radovick, S., M. Nations, Y. Du, L. A. Berg, B. D. Weintraub, and F. E. Wondisford. 1992. A mutation in the POU-homeodomain of Pit-1 responsible for combined pituitary hormone deficiency. *Science (Washington DC)* 257:1115.
- Tuggle, C. K., J. Helm, T.-P. Yu, and M. F. Rothschild. 1993. Cloning and RFLP analysis of a cDNA for swine PIT-1, a gene controlling growth hormone expression. *Anim. Genet.* 24:17.

**Key Words:** Pigs, Growth Hormone, RFLP, Genetic Markers

J. Anim. Sci. 1993. 71:2275

Table 1. PIT-1 polymorphism analysis

Breed (no.)	Percentage of animals with indicated genotype		
	4.5/4.5	4.5/3.75	3.75/3.75
Fengjing (6)	66	33	0
Meishan (9)	22	66	11
Minzhu (7)	28	43	28
C. White (9)	0	0	100
Duroc (12)	0	0	100
Hampshire (12)	0	0	100
Landrace (9)	0	0	100
Yorkshire (9)	0	33	66
Total: 73			

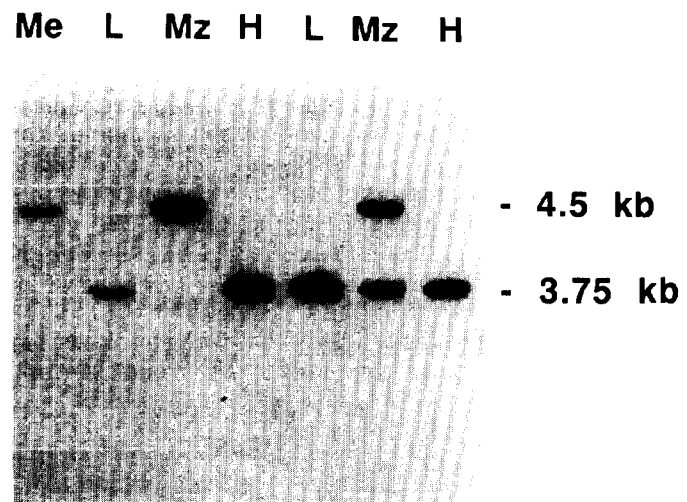


Figure 1. Swine PIT-1 *MspI* polymorphism analysis. Two allelic fragments of 4.5 kb and 3.75 kb are detected. Note that all three possible genotypes are represented (Me: Meishan; L: Landrace; Mz: Minzhu; H: Hampshire).

<sup>1</sup>Journal paper no. J-15309 of the Iowa Agriculture Home Econ. Exp. Sta., Ames. Projects no. 3038 and 3085.

<sup>2</sup>To whom correspondence should be addressed.

Received April 14, 1993.

Accepted May 27, 1993.