

3-1-2013

Heat capacity jump at T_c and pressure derivatives of superconducting transition temperature in the $Ba_{1-x}K_xFe_2As_2$ ($0.2 \leq x \leq 1.0$) series

Sergey L. Bud'ko

Iowa State University and Ames Laboratory, budko@ameslab.gov

Mihai Sturza

Argonne National Laboratory

Duck Young Chung

Argonne National Laboratory

Mercouri G. Kanatzidis

Argonne National Laboratory and Northwestern University

Paul C. Canfield

Iowa State University and Ames Laboratory, canfield@ameslab.gov

Follow this and additional works at: https://lib.dr.iastate.edu/physastro_pubs



Part of the [Condensed Matter Physics Commons](#)

The complete bibliographic information for this item can be found at https://lib.dr.iastate.edu/physastro_pubs/562.
For information on how to cite this item, please visit <http://lib.dr.iastate.edu/howtocite.html>.

This Article is brought to you for free and open access by the Physics and Astronomy at Iowa State University Digital Repository. It has been accepted for inclusion in Physics and Astronomy Publications by an authorized administrator of Iowa State University Digital Repository. For more information, please contact digirep@iastate.edu.

Heat capacity jump at T_c and pressure derivatives of superconducting transition temperature in the $Ba_{1-x}K_xFe_2As_2$ ($0.2 \leq x \leq 1.0$) series

Abstract

We present the evolution of the initial (up to similar to 10 kbar) hydrostatic pressure dependencies of T_c and of the ambient pressure jump in the heat capacity associated with the superconducting transition as a function of K doping in the $Ba_{1-x}K_xFe_2As_2$ family of iron-based superconductors. The pressure derivatives show a weak but distinct anomaly near x similar to 0.7. In the same concentration region, ΔC_p vertical bar(T_c) deviates from the ΔC_p proportional to T_c^3 scaling found for most $BaFe_2As_2$ -based superconductors. These results are consistent with a possible significant modification of the superconducting state, occurring near x similar to 0.7.

Disciplines

Condensed Matter Physics

Comments

This article is published as Bud'ko, Sergey L., Mihai Sturza, Duck Young Chung, Mercuri G. Kanatzidis, and Paul C. Canfield. "Heat capacity jump at T_c and pressure derivatives of superconducting transition temperature in the $Ba_{1-x}K_xFe_2As_2$ ($0.2 \leq x \leq 1.0$) series." *Physical Review B* 87, no. 10 (2013): 100509. DOI: [10.1103/PhysRevB.87.100509](https://doi.org/10.1103/PhysRevB.87.100509). Posted with permission.



Heat capacity jump at T_c and pressure derivatives of superconducting transition temperature in the $\text{Ba}_{1-x}\text{K}_x\text{Fe}_2\text{As}_2$ ($0.2 \leq x \leq 1.0$) series

Sergey L. Bud'ko,¹ Mihai Sturza,² Duck Young Chung,² Mercouri G. Kanatzidis,^{2,3} and Paul C. Canfield¹

¹Ames Laboratory, US DOE, and Department of Physics and Astronomy, Iowa State University, Ames, Iowa 50011, USA

²Materials Science Division, Argonne National Laboratory, Argonne, Illinois 60439-4845, USA

³Department of Chemistry, Northwestern University, Evanston, Illinois 60208-3113, USA

(Received 6 March 2013; revised manuscript received 12 March 2013; published 22 March 2013)

We present the evolution of the initial (up to ~ 10 kbar) hydrostatic pressure dependencies of T_c and of the ambient pressure jump in the heat capacity associated with the superconducting transition as a function of K doping in the $\text{Ba}_{1-x}\text{K}_x\text{Fe}_2\text{As}_2$ family of iron-based superconductors. The pressure derivatives show a weak but distinct anomaly near $x \sim 0.7$. In the same concentration region, $\Delta C_p|_{T_c}$ deviates from the $\Delta C_p \propto T^3$ scaling found for most BaFe_2As_2 -based superconductors. These results are consistent with a possible significant modification of the superconducting state, occurring near $x \sim 0.7$.

DOI: [10.1103/PhysRevB.87.100509](https://doi.org/10.1103/PhysRevB.87.100509)

PACS number(s): 74.62.Fj, 74.70.Xa, 74.25.Bt, 74.62.Dh

I. INTRODUCTION

For the last half decade a significant experimental and theoretical effort has concentrated on studies of the physical properties of Fe-based superconductors and related materials.¹⁻³ Of the several families of Fe-based superconductors discovered to date, the 122, $AE\text{Fe}_2\text{As}_2$ ($AE = \text{alkaline earth and Eu}$) family, is the most studied one.⁴⁻⁶ This family offers possibilities for substitutions on all three crystallographic sites that can result in a complex combination of steric and carrier-doping effects while maintaining simplicity of the crystal structure. However, the main body of the published work on the 122 family has focused on the $AE(\text{Fe}_{1-x}\text{TM}_x)_2\text{As}_2$ series, in which the $3d-$, $4d-$, and sometimes $5d-$ transition metals substitute for Fe. This is due to the reasonable ease of growing large, high quality, homogeneous single crystals.

Despite the fact that in the 122 system, superconductivity, with a $T_c \approx 38$ K, was first reported on K doping of BaFe_2As_2 ⁷ and this value of T_c is still holding a record for bulk superconductivity in the $AE\text{Fe}_2\text{As}_2$ -related materials, detailed studies of the complete $\text{Ba}_{1-x}\text{K}_x\text{Fe}_2\text{As}_2$ solid solution series are not so common,⁸⁻¹⁰ and concentrate mainly on the evolution of the crystallographic properties and the x - T phase diagram. One of the reasons for this is a persistent difficulty in determination of the reliable procedure for synthesis of homogeneous $\text{Ba}_{1-x}\text{K}_x\text{Fe}_2\text{As}_2$ single crystals in a wide range of K concentration.

In the hole-doped $\text{Ba}_{1-x}\text{K}_x\text{Fe}_2\text{As}_2$ series, superconductivity is observed over a wide range of K concentrations, $0.15 \lesssim x \leq 1.0$ ⁸⁻¹⁰ [as compared to $0.03 \lesssim x \lesssim 0.15$ for the electron-doped $\text{Ba}(\text{Fe}_{1-x}\text{Co}_x)_2\text{As}_2$ ¹¹]. For underdoped $\text{Ba}_{1-x}\text{K}_x\text{Fe}_2\text{As}_2$, superconductivity and magnetism microscopically co-exist¹² [similarly to what was observed in the electron-doped $\text{Ba}(\text{Fe}_{1-x}\text{TM}_x)_2\text{As}_2$ ^{4,13}]. Near optimal doping, $x \sim 0.4$, several experiments and theoretical calculations give evidence for a nodeless, near constant, s_{\pm} superconducting gap that changes sign between hole and electron pockets.¹⁴⁻¹⁸ Recent ARPES measurements¹⁹ suggest that the s_{\pm} superconducting gap exists in a wide doping range, $0.25 \leq x \leq 0.7$.

KFe_2As_2 stands out among the members of the $\text{Ba}_{1-x}\text{K}_x\text{Fe}_2\text{As}_2$ series. The reported Fermi surface of KFe_2As_2 differs from that of the optimally doped $\text{Ba}_{1-x}\text{K}_x\text{Fe}_2\text{As}_2$ having three hole pockets, two centered at the Γ point in the Brillouin zone, and one around the M point²⁰ with no electron pockets. Quantum criticality, and nodal or d -wave superconductivity in KFe_2As_2 was suggested in a number of publications.²¹⁻²⁷ Possible evolution from s_{\pm} to d wave in the $\text{Ba}_{1-x}\text{K}_x\text{Fe}_2\text{As}_2$ series has also been discussed.^{28,29}

Given the debates present in the literature regarding the evolution of physical properties in the $\text{Ba}_{1-x}\text{K}_x\text{Fe}_2\text{As}_2$ series and its apparent difference from the extensively studied $AE(\text{Fe}_{1-x}\text{TM}_x)_2\text{As}_2$ series, it is of importance to have a broad set of data on $\text{Ba}_{1-x}\text{K}_x\text{Fe}_2\text{As}_2$, in particular, data related to the superconducting state. In this work, we present two data sets obtained for the $\text{Ba}_{1-x}\text{K}_x\text{Fe}_2\text{As}_2$ series with K concentrations covering underdoped, optimally doped, and overdoped regions, up to the end compound, pure KFe_2As_2 . The first set is comprised of the initial ($P \lesssim 10$ kbar) pressure dependencies of the superconducting transition temperatures $T_c(P)$ and is alike the data reported for $\text{Ba}(\text{Fe}_{1-x}\text{Co}_x)_2\text{As}_2$.³⁰ Such data have the potential to assess the possibility of equivalence of pressure and doping that was suggested for several 122 series.³¹⁻³⁴ Moreover, under favorable circumstances such dataset can shed light on the details of superconductivity mechanism in the particular series.³⁵⁻³⁷ The second set consists of the data on the evolution of the jump in heat capacity at the superconducting transition. Many Fe-based, 122 superconductors follow the trend suggested in Ref. 38 and expanded in Ref. 39, the so-called BNC scaling, $\Delta C_p|_{T_c} \propto T_c^3$. Several theoretical models⁴⁰⁻⁴² that were suggested to explain this scaling are still under debate. The underdoped and optimally doped $\text{Ba}_{1-x}\text{K}_x\text{Fe}_2\text{As}_2$ appear to follow this trend as well,^{38,43} whereas the stoichiometric end-compound KFe_2As_2 clearly deviates from the trend.⁴⁴ Detailed study of the $\Delta C_p|_{T_c}$ in the whole range of K concentrations might clarify the evolution of superconducting properties in the series.

II. EXPERIMENTAL DETAILS

Homogeneous, single phase, $\text{Ba}_{1-x}\text{K}_x\text{Fe}_2\text{As}_2$ polycrystalline powders with $x = 0.2, 0.3, 0.4, 0.6, 0.7, 0.8, 0.9$, and 1.0 were synthesized by a procedure similar to that reported earlier.¹⁰ The starting reagents, KAs, BaAs, and Fe_2As were prepared by heating elemental mixtures at 450°C , 650°C , and 850°C , respectively. For each composition, a stoichiometric mixture of these binary compounds was thoroughly ground to a uniform and homogeneous powder, loaded in an alumina crucible subsequently enclosed in a niobium tube and then sealed in a quartz tube, and preheated at 600°C for 12 h. This sintered mixture was then r-ground and pressed into a pellet, which was again loaded in a niobium tube and sealed in a quartz tube. The pellet was heated to $800^\circ\text{C} \leq T \leq 1100^\circ\text{C}$, depending on the composition, for 24 to 48 h followed by quenching to room temperature in air. The homogeneity of $\text{Ba}_{1-x}\text{K}_x\text{Fe}_2\text{As}_2$ polycrystalline powder was ensured by repeating this process multiple times. The structure and quality of the final crystalline powders of $\text{Ba}_{1-x}\text{K}_x\text{Fe}_2\text{As}_2$ were confirmed by x-ray powder diffraction and magnetization measurements and the x values of all products were estimated by comparing the superconducting T_c 's observed with those precisely determined in the phase diagram reported previously.¹⁰ For the end-member sample with $x = 1.0$, the single phase product was prepared by a flux reaction of Fe/KAs at 1:6 ratio at 1000°C for 6 h. The pure crystals of KFe_2As_2 were then isolated by dissolving the excess KAs flux in alcohol under a nitrogen atmosphere.

The synthesis of $\text{Ba}_{1-x}\text{K}_x\text{Fe}_2\text{As}_2$ has been known to be delicate mainly because of high vapor pressures of K/As and an unfavorable kinetics toward the composition of optimally doped state $x = 0.4$ that exhibits the highest T_c in the $\text{Ba}_{1-x}\text{K}_x\text{Fe}_2\text{As}_2$ series. Particularly for the underdoped region between $x = 0.3$ and 0.15 where the superconductivity of $\text{Ba}_{1-x}\text{K}_x\text{Fe}_2\text{As}_2$ emerges, it is very difficult to obtain highly homogeneous samples with a sharp single transition because of a very sensitive change in T_c by a small variation in composition in this region (see the phase diagram in Ref. 10 or in Fig. 3 below). Therefore, in this synthetic procedure, a closed metal tube, with minimal volume, is necessary to suppress vaporization of K/As at high temperatures. Also for better control of K/Ba ratio during the reaction, the annealing temperature was gradually increased from 800°C for $x = 0.9$ to 1100°C for $x = 0.2$. About 10–20% of additional KAs in the reaction mixture after the pre-reaction is needed to compensate the loss of K/As that occurs by the extended period of annealing at high temperature for all compositions. Handling of all materials was carried out under a dry argon atmosphere.

Low-field dc magnetization under pressure, was measured in a Quantum Design Magnetic Property Measurement System, MPMS-5, SQUID (superconducting quantum interference device) magnetometer using a commercial, HMD, Be-Cu piston-cylinder pressure cell.⁴⁵ Daphne oil 7373 was used as a pressure medium and superconducting Pb or Sn (to have its superconducting transition well separated from that of the sample) as a low-temperature pressure gauge.⁴⁶ The heat capacity was measured using a hybrid adiabatic relaxation technique of the heat capacity option in a Quantum

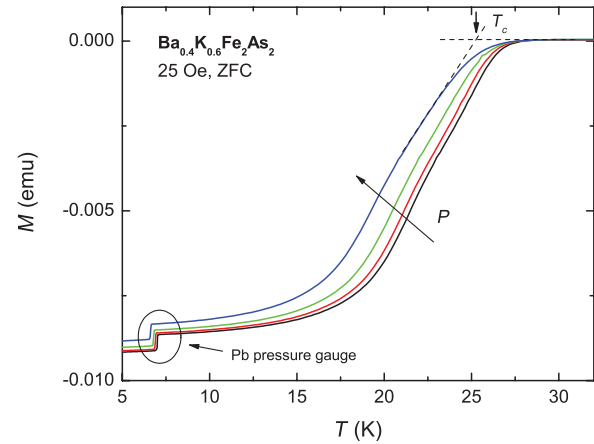


FIG. 1. (Color online) Example of temperature-dependent magnetization (zero-field-cooled, taken in 25 Oe applied magnetic field) of $\text{Ba}_{0.4}\text{K}_{0.6}\text{Fe}_2\text{As}_2$ measured at 1.5, 3.9, 6.5, and 11.1 kbar. The criterion for T_c (for $P = 11.1$ kbar curve as an example) used in this work is shown by the arrow. Superconducting transitions in Pb used as a pressure gauge are seen near 7 K.

Design Physical Property Measurement System, PPMS-9 or PPMS-14, instrument.

III. RESULTS

A. Pressure dependence of T_c

An example of $M(T)$ data taken at different pressures is shown in Fig. 1. An onset criterion was used to determine T_c . Since none of the samples was suffering from a distinct change of the transition width under pressure, alternative criteria (like maximum in dM/dT) yield similar pressure dependencies. The pressure dependencies of the superconducting transition temperatures for the samples with all K concentrations studied in this work are shown in Fig. 2. For the underdoped sample, with $x = 0.2$, T_c increases under pressure, for samples close to the optimally doped, $x = 0.3, 0.4$, the $T_c(P)$ dependencies are basically flat, and for the overdoped samples, $x \geq 0.6$, T_c decreases under pressure. For all samples, except the underdoped $x = 0.2$ the $T_c(P)$ behavior is linear, as such the pressure dependencies of T_c can be well represented by dT_c/dP values. The set of $T_c(P)$ data yields the ambient pressure $T_{c0}(x)$ values defined as extrapolation to $P = 0$ data under pressure. These values are consistent with the superconducting transition temperatures obtained from the analysis of the ambient pressure specific heat data below, shown as stars in Fig. 2.

A more compact way to look at the pressure dependence of T_c in the $\text{Ba}_{1-x}\text{K}_x\text{Fe}_2\text{As}_2$ series is presented in Fig. 3, where the results of this work are plotted together with the literature data^{44,47} that show consistency between different groups/samples in the overlapping concentration regions. The $T_{c0}(x)$ data are consistent with the ambient pressure data in the literature^{8–10} and are shown for reference. The K-concentration dependent pressure derivatives, dT_c/dP , and normalized, $d(\ln T_c)/dP$, show a clear trend and three different K-concentrations regions. The pressure derivatives are positive and rather high for the significantly underdoped samples ($x \sim 0.2$, $T_c < 20$ K). They become small and negative for $0.3 \leq$

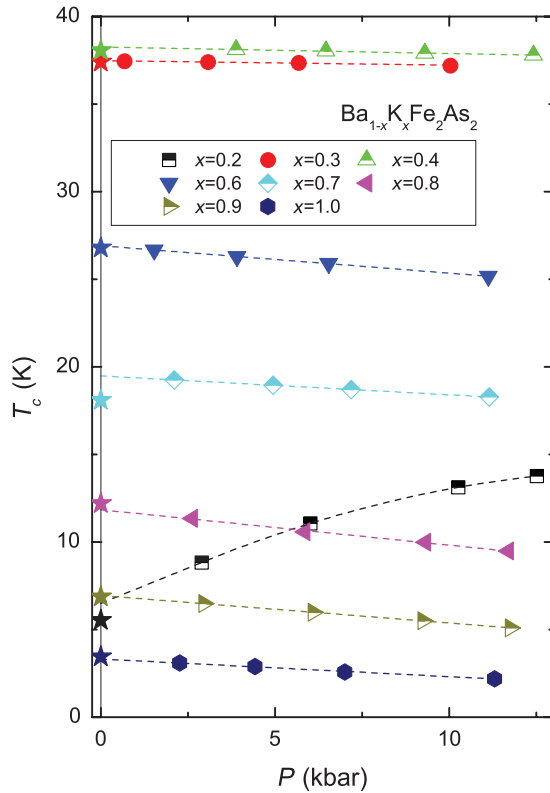


FIG. 2. (Color online) Summary plot of the pressure dependence of T_c for the samples studied in this work. Dashed lines are linear fits to the data except for the $x = 0.2$ where the fit is a second-order polynomial. These lines are extended to $P = 0$. Stars are the T_c values obtained in the analysis of the ambient pressure heat capacity data below.

$x \leq 0.7$, this concentration range covers slightly underdoped, optimally doped, and part of the overdoped samples; the concentration dependence of dT_c/dP [or $d(\ln T_c)/dP$] is close to linear in this middle region. On further increase of x the x dependence of the pressure derivatives deviated from the shallow linear behavior (this trend is better seen in the concentration dependence of the normalized pressure derivatives).

Figure 4 presents a comparison of the relative changes in superconducting transition temperature under pressure and with K doping. For $0.2 \leq x \leq 0.7$, both sets of data can be scaled reasonably well, illustrating apparent equivalence of the effect of pressure and doping on T_c , suggested for other members of the 122 family.^{31–34} This scaling, however, fails for $0.7 < x \leq 1.0$.

B. Jump in specific heat

All samples studied in this work except for $x = 0.2$ show an unambiguous jump in specific heat at T_c (see Fig. 5 as an example). The T_c and $\Delta C_p|_{T_c}$ values were determined by a procedure consistent with that used in Ref. 38. For $x = 0.2$, the difference between the data taken in zero field and 140 kOe applied field was analyzed and the error bars in the obtained ΔC_p at T_c value are expected to be rather large. The specific heat jump data for the $\text{Ba}_{1-x}\text{K}_x\text{Fe}_2\text{As}_2$ series obtained in this work were added in Fig. 6 to the updated BNC plot taken from

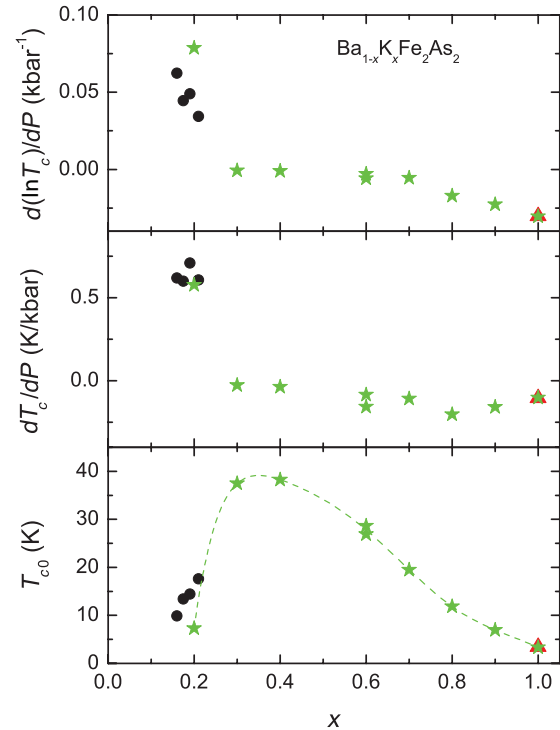


FIG. 3. (Color online) $d(\ln T_c)/dP$, dT_c/dP , and T_{c0} (top to bottom) as a function of K concentration in $\text{Ba}_{1-x}\text{K}_x\text{Fe}_2\text{As}_2$. Symbols: stars are the data of this work, triangle are the data for KFe_2As_2 from Ref. 44, and circles are the data for four underdoped samples obtained by linear fits of the first three-four data points under pressure in Ref. 47. T_{c0} values are taken from the linear fits of $T_c(P)$. Two symbols for $x = 0.6$ correspond to measurements on two samples of slightly differing quality. Dashed line is a guide for the eye.

Ref. 44. Again, there appears to be a clear trend; for $0.2 \leq x \leq 0.7$, the data follow the BNC scaling, in agreement with the scattered literature data for the samples with K concentrations in this range. The data for $0.8 \leq x \leq 1.0$ clearly deviate from this scaling, with the data for the end-compound KFe_2As_2

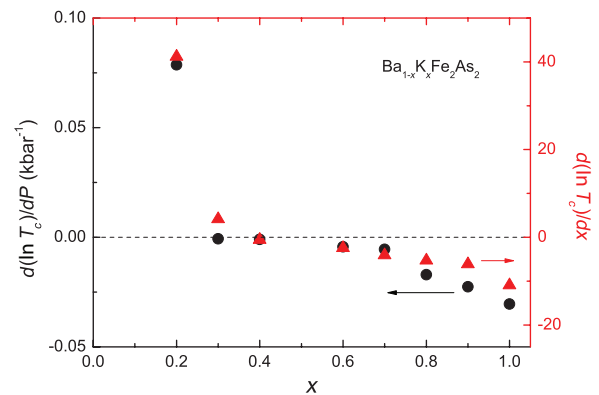


FIG. 4. (Color online) K concentration dependence of the normalized pressure derivatives, $d(\ln T_c)/dP = \frac{1}{T_{c0}} dT_c/dP$ (left axis, circles), and the normalized concentration derivatives, $d(\ln T_c)/dx = \frac{1}{T_{c0}} dT_c/dx$ (right axis, triangles) of the superconducting transition temperatures. Dashed line corresponds to the shared zero on Y axes.

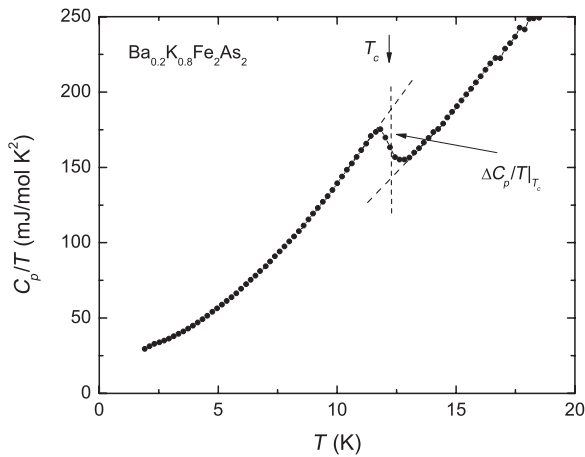


FIG. 5. Temperature-dependent heat capacity of $\text{Ba}_{0.2}\text{K}_{0.8}\text{Fe}_2\text{As}_2$ plotted as C_p/T vs T . Criteria for T_c and $\Delta C_p|_{T_c}$ (isoentropic construct) are shown.

being consistent with the previously published value.⁴⁴ This is clearly different from the studied $\text{Ba}(\text{Fe}_{1-x}\text{TM}_x)_2\text{As}_2$ series for which the BNC scaling was observed for the samples covering the full extent of the superconducting dome.

IV. DISCUSSION AND SUMMARY

Both sets of measurements point out that some change in superconducting properties of $\text{Ba}_{1-x}\text{K}_x\text{Fe}_2\text{As}_2$ occurs near the $x = 0.7$ concentration range. NMR results²⁹ suggested that the nodal line structure of the superconducting gap emerges at $x \sim 0.7$ without a change of the gap symmetry, although the possibility of the change of the superconducting gap symmetry at this concentration was not completely excluded. These suggested changes were related to a Lifshitz transition, a disappearance of the electron pockets in the Fermi surface, at similar K-doping levels.²⁹ The anomaly in the evolution of the pressure derivatives with concentration is consistent with what one would expect in the case of the Lifshitz transition,⁴⁸ along the same lines as evolution of dT_c/dP was understood in several cuprates.^{35,36} The observed violation of the BNC scaling hints that some significant changes might happen in the nature of the superconducting state as well.

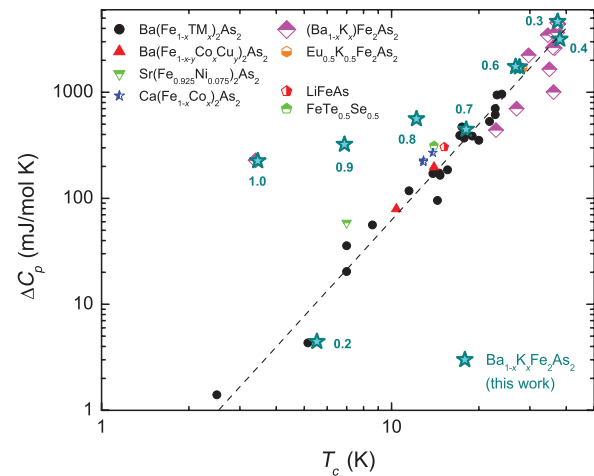


FIG. 6. (Color online) ΔC_p at the superconducting transition vs T_c for the $\text{Ba}_{1-x}\text{K}_x\text{Fe}_2\text{As}_2$ series, plotted together with literature data for various FeAs-based superconducting materials. Updated plot⁴⁴ is used to show the literature data. The line corresponds to $\Delta C_p \propto T_c^3$. Numbers near the symbols are K concentration x . Two symbols for $x = 0.6$ correspond to measurements on two samples of slightly differing quality.

These results delineate the difference between transition metal doping and K doping in the BaFe_2As_2 series concentration and define the K-concentration region where the superconducting state (possibly the order parameter) is significantly modified. Further measurements for concentrations around 70% of K (in particular, ARPES and thermal conductivity) would be desirable to understand the observed anomalies.

ACKNOWLEDGMENTS

Work at the Ames Laboratory was supported by the US Department of Energy, Basic Energy Sciences, Division of Materials Sciences and Engineering under Contract No. DE-AC02-07CH11358. Work at the Argonne National Laboratory supported by the US Department of Energy, Office of Basic Energy Sciences under contract No. DE-AC02-06CH11357. S.L.B. acknowledges partial support from the State of Iowa through Iowa State University.

¹D. C. Johnston, *Adv. Phys.* **59**, 803 (2010).

²G. R. Stewart, *Rev. Mod. Phys.* **83**, 1589 (2011).

³Dirk Johrendt, *J. Mater. Chem.* **21**, 13726 (2011).

⁴Paul C. Canfield and Sergey L. Bud'ko, *Annu. Rev. Condens. Matter Phys.* **1**, 27 (2010).

⁵N. Ni and Sergey L. Bud'ko, *MRS Bull.* **36**, 620 (2011).

⁶D. Mandrus, A. S. Sefat, M. A. McGuire, and B. C. Sales, *Chem. Mater.* **22**, 715 (2010).

⁷Marianne Rotter, Marcus Tegel, and Dirk Johrendt, *Phys. Rev. Lett.* **101**, 107006 (2008).

⁸Marianne Rotter, Michael Pangerl, Marcus Tegel, and Dirk Johrendt, *Angew. Chem., Int. Ed.* **47**, 7949 (2008).

⁹H. Chen, Y. Ren, Y. Qiu, Wei Bao, R. H. Liu, G. Wu, T. Wu, Y. L. Xie, X. F. Wang, Q. Huang, and X. H. Chen, *Europhys. Lett.* **85**, 17006 (2009).

¹⁰S. Avci, O. Chmaissem, D. Y. Chung, S. Rosenkranz, E. A. Goremychkin, J. P. Castellan, I. S. Todorov, J. A. Schlueter, H. Claus, A. Daoud-Aladine, D. D. Khalyavin, M. G. Kanatzidis, and R. Osborn, *Phys. Rev. B* **85**, 184507 (2012).

¹¹N. Ni, M. E. Tillman, J.-Q. Yan, A. Kracher, S. T. Hannahs, S. L. Bud'ko, and P. C. Canfield, *Phys. Rev. B* **78**, 214515 (2008).

¹²Erwin Wiesenmayer, Hubertus Luetkens, Gwendolyne Pascua, Rustem Khasanov, Alex Amato, Heidi Potts, Benjamin Banusch, Hans-Henning Klaus, and Dirk Johrendt, *Phys. Rev. Lett.* **107**, 237001 (2011).

- ¹³D. K. Pratt, W. Tian, A. Kreyssig, J. L. Zarestky, S. Nandi, N. Ni, S. L. Bud'ko, P. C. Canfield, A. I. Goldman, and R. J. McQueeney, *Phys. Rev. Lett.* **103**, 087001 (2009).
- ¹⁴H. Ding, P. Richard, K. Nakayama, K. Sugawara, T. Arakane, Y. Sekiba, A. Takayama, S. Souma, T. Sato, T. Takahashi, Z. Wang, X. Dai, Z. Fang, G. F. Chen, J. L. Luo, and N. L. Wang, *Europhys. Lett.* **83**, 47001 (2008).
- ¹⁵A. D. Christianson, E. A. Goremychkin, R. Osborn, S. Rosenkranz, M. D. Lumsden, C. D. Malliakas, I. S. Todorov, H. Claus, D. Y. Chung, M. G. Kanatzidis, R. I. Bewley, and T. Guidi, *Nature (London)* **456**, 930 (2008).
- ¹⁶X. G. Luo, M. A. Tanatar, J.-Ph. Reid, H. Shakeripour, N. Doiron-Leyraud, N. Ni, S. L. Bud'ko, P. C. Canfield, H. Luo, Z. Wang, H. H. Wen, R. Prozorov, and L. Taillefer, *Phys. Rev. B* **80**, 140503 (2009).
- ¹⁷S. Graser, T. A. Maier, P. J. Hirschfeld, and D. J. Scalapino, *New J. Phys.* **11**, 025016 (2009).
- ¹⁸I. I. Mazin and J. Schmalian, *Physica C* **469**, 614 (2009).
- ¹⁹K. Nakayama, T. Sato, P. Richard, Y.-M. Xu, T. Kawahara, K. Umezawa, T. Qian, M. Neupane, G. F. Chen, H. Ding, and T. Takahashi, *Phys. Rev. B* **83**, 020501 (2011).
- ²⁰T. Sato, K. Nakayama, Y. Sekiba, P. Richard, Y.-M. Xu, S. Souma, T. Takahashi, G. F. Chen, J. L. Luo, N. L. Wang, and H. Ding, *Phys. Rev. Lett.* **103**, 047002 (2009).
- ²¹K. Hashimoto, A. Serafin, S. Tonegawa, R. Katsumata, R. Okazaki, T. Saito, H. Fukazawa, Y. Kohori, K. Kihou, C. H. Lee, A. Iyo, H. Eisaki, H. Ikeda, Y. Matsuda, A. Carrington, and T. Shibauchi, *Phys. Rev. B* **82**, 014526 (2010).
- ²²J. K. Dong, S. Y. Zhou, T. Y. Guan, H. Zhang, Y. F. Dai, X. Qiu, X. F. Wang, Y. He, X. H. Chen, and S. Y. Li, *Phys. Rev. Lett.* **104**, 087005 (2010).
- ²³Taichi Terashima, Motoi Kimata, Nobuyuki Kurita, Hidetaka Satsukawa, Atsushi Harada, Kaori Hazama, Motoharu Imai, Akira Sato, Kunihiko Kihou, Chul-Ho Lee, Hijiri Kito, Hiroshi Eisaki, Akira Iyo, Taku Saito, Hideto Fukazawa, Yoh Kohori, Hisatomo Harima, and Shinya Uji, *Phys. Rev. Lett.* **104**, 259701 (2010).
- ²⁴J. K. Dong and S. Y. Li, *Phys. Rev. Lett.* **104**, 259702 (2010).
- ²⁵J.-Ph. Reid, M. A. Tanatar, A. Juneau-Fecteau, R. T. Gordon, S. R. deCotret, N. Doiron-Leyraud, T. Saito, H. Fukazawa, Y. Kohori, K. Kihou, C. H. Lee, A. Iyo, H. Eisaki, R. Prozorov, and L. Taillefer, *Phys. Rev. Lett.* **109**, 087001 (2012).
- ²⁶S. Maiti, M. M. Korshunov, and A. V. Chubukov, *Phys. Rev. B* **85**, 014511 (2012).
- ²⁷R. Thomale, C. Platt, W. Hanke, J. Hu, and B. A. Bernevig, *Phys. Rev. Lett.* **107**, 117001 (2011).
- ²⁸J.-Ph. Reid, A. Juneau-Fecteau, R. T. Gordon, S. Rene de Cotret, N. Doiron-Leyraud, X. G. Luo, H. Shakeripour, J. Chang, M. A. Tanatar, H. Kim, R. Prozorov, T. Saito, H. Fukazawa, Y. Kohori, K. Kihou, C. H. Lee, A. Iyo, H. Eisaki, B. Shen, H.-H. Wen, and Louis Taillefer, *Supercond. Sci. Technol.* **25**, 084013 (2012).
- ²⁹Masanori Hirano, Yuji Yamada, Taku Saito, Ryo Nagashima, Takehisa Konishi, Tatsuya Toriyama, Yukinori Ohta, Hideto Fukazawa, Yoh Kohori, Yuji Furukawa, Kunihiko Kihou, Chul-Ho Lee, Akira Iyo, and Hiroshi Eisaki, *J. Phys. Soc. Jpn.* **81**, 054704 (2012).
- ³⁰K. Ahilan, F. L. Ning, T. Imai, A. S. Sefat, M. A. McGuire, B. C. Sales, and D. Mandrus, *Phys. Rev. B* **79**, 214520 (2009).
- ³¹Simon A. J. Kimber, Andreas Kreyssig, Yu-Zhong Zhang, Harald O. Jeschke, Roser Valentí, Fabiano Yokaichiya, Estelle Colombier, Jiaqiang Yan, Thomas C. Hansen, Tapan Chatterji, Robert J. McQueeney, Paul C. Canfield, Alan I. Goldman, and Dimitri N. Argyriou, *Nat. Mater.* **8**, 471 (2009).
- ³²Sandra Drotziger, Peter Schweiss, Kai Grube, Thomas Wolf, Peter Adelman, Christoph Meingast, and Hilbert v. Löhneisen, *J. Phys. Soc. Jpn.* **79**, 124705 (2010).
- ³³Lina E. Klintberg, Swee K. Goh, Shigeru Kasahara, Yusuke Nakai, Kenji Ishida, Michael Sutherland, Takasada Shibauchi, Yuji Matsuda, and Takahito Terashima, *J. Phys. Soc. Jpn.* **79**, 123706 (2010).
- ³⁴S. K. Kim, M. S. Torikachvili, E. Colombier, A. Thaler, S. L. Bud'ko, and P. C. Canfield, *Phys. Rev. B* **84**, 134525 (2011).
- ³⁵Q. Xiong, J. W. Chu, Y. Y. Sun, H. H. Feng, S. Bud'ko, P. H. Hor, and C. W. Chu, *Phys. Rev. B* **46**, 581 (1992).
- ³⁶Y. Cao, Q. Xiong, Y. Y. Xue, and C. W. Chu, *Phys. Rev. B* **52**, 6854 (1995).
- ³⁷W. H. Fietz, R. Quenzel, H. A. Ludwig, K. Grube, S. I. Schlachter, F. W. Hornung, T. Wolf, A. Erb, M. Kläser, and G. Müller-Vogt, *Physica C* **270**, 258 (1996).
- ³⁸S. L. Bud'ko, N. Ni, and P. C. Canfield, *Phys. Rev. B* **79**, 220516 (2009).
- ³⁹J. S. Kim, G. R. Stewart, S. Kasahara, T. Shibauchi, T. Terashima, and Y. Matsuda, *J. Phys.: Condens. Matter* **23**, 222201 (2011).
- ⁴⁰J. Zaanen, *Phys. Rev. B* **80**, 212502 (2009).
- ⁴¹V. G. Kogan, *Phys. Rev. B* **80**, 214532 (2009); **81**, 184528 (2010).
- ⁴²M. G. Vavilov, A. V. Chubukov, and A. B. Vorontsov, *Phys. Rev. B* **84**, 140502 (2011); M. G. Vavilov and A. V. Chubukov, *ibid.* **84**, 214521 (2011).
- ⁴³Ch. Kant, J. Deisenhofer, A. Günther, F. Schrettle, A. Loidl, M. Rotter, and D. Johrendt, *Phys. Rev. B* **81**, 014529 (2010).
- ⁴⁴Sergey L. Bud'ko, Yong Liu, Thomas A. Lograsso, and Paul C. Canfield, *Phys. Rev. B* **86**, 224514 (2012).
- ⁴⁵www.qdusa.com/products/high-pressure-cell-mpms.html
- ⁴⁶A. Eiling and J. S. Schilling, *J. Phys. F: Metal Phys.* **11**, 623 (1981).
- ⁴⁷E. Hassinger, G. Gredat, F. Valade, S. R. de Cotret, A. Juneau-Fecteau, J.-Ph. Reid, H. Kim, M. A. Tanatar, R. Prozorov, B. Shen, H.-H. Wen, N. Doiron-Leyraud, and L. Taillefer, *Phys. Rev. B* **86**, 140502 (2012).
- ⁴⁸V. I. Makarov and V. G. Bar'yakhtar, *Zh. Eksp. Teor. Fiz.* **48**, 1717 (1965) [*Sov. Phys. JETP* **21**, 1151 (1965)].