

1-1-1969

Dedication

Ames Forestry Club

Follow this and additional works at: <https://lib.dr.iastate.edu/amesforester>



Part of the [Forest Sciences Commons](#)

Recommended Citation

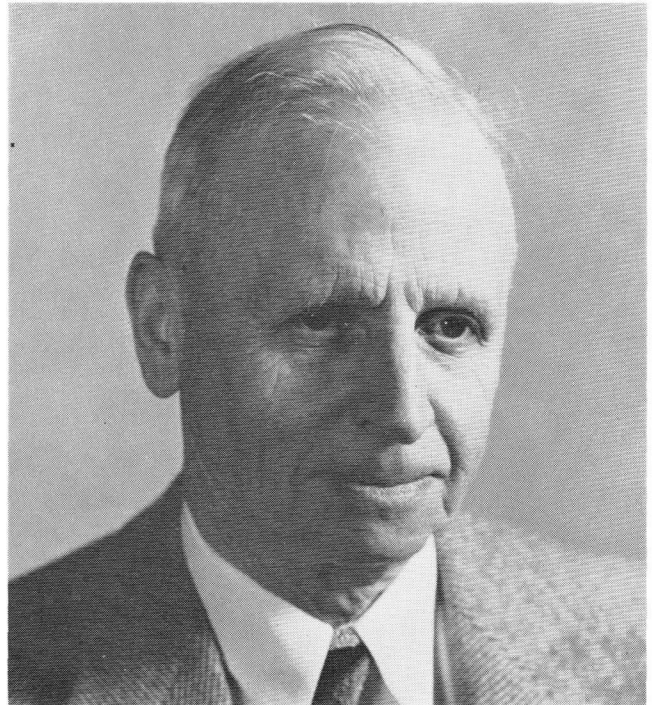
Ames Forestry Club (1969) "Dedication," *Ames Forester*: Vol. 56 , Article 4.

Available at: <https://lib.dr.iastate.edu/amesforester/vol56/iss1/4>

This Article is brought to you for free and open access by the Journals at Iowa State University Digital Repository. It has been accepted for inclusion in Ames Forester by an authorized editor of Iowa State University Digital Repository. For more information, please contact digirep@iastate.edu.

Dedication

SHIRLEY WALTER ALLEN
(1883–1968)



Shirley Walter Allen, one of the nation's outstanding conservation leaders and educators, and graduate of Iowa State University, died in September at Ann Arbor, Michigan. He was 85.

Born on October 14, 1883, in Sherman, New York, Professor Allen received his Bachelor degree from Iowa State in 1909, and he later received his Master degree here. His early work was with the U.S. Forest Service in California, where he rose to supervisor of the Angeles National Forest in 1920. He was also an instructor at State University College of Forestry at Syracuse University and completed war-time service with the U.S. Forest Products Laboratory. For the four years before joining the faculty at the University of Michigan in 1928, he served as forester for the American Forestry Association. During his 30 years there he developed courses in conservation of natural resources and taught the first course in forest recreation, as well as being the author of two books: *An Introduction to American Forestry and Conserving Natural Resources*.

Professor Allen's professional life was active. In

the span from 1940–1947, he served on the Society of American Foresters Council, as vice-president of the Society, and its president. The SAF elected him a Fellow in 1948.

From 1953–1959, he was commissioner of the Michigan Department of Conservation, and he was chairman for one term. He was active in Democratic politics and was advisor to Democratic officials in making appointments in the field of conservation. His professional affiliations included American Forestry Association, Isaac Walton League, Wilderness Society, Nature Conservancy, Michigan Natural Areas Council, and Michigan Academy of Sciences. He was consultant to the National Park Service, official delegate to the Second World Forestry Congress in Budapest in 1936, and in 1950 he was named advisor to the U.S. Secretary of the Interior.

In recognition of his outstanding leadership in the forestry profession and in the field of conservation, this issue of the *Ames Forester* is dedicated to Professor Shirley W. Allen.

* Portions Reprinted From *Journal of Forestry*