

1-1-1991

Christmas Tree Plantation

Marty Schneider
Iowa State University

Follow this and additional works at: <https://lib.dr.iastate.edu/amesforester>



Part of the [Forest Sciences Commons](#)

Recommended Citation

Schneider, Marty (1991) "Christmas Tree Plantation," *Ames Forester*: Vol. 78 , Article 18.
Available at: <https://lib.dr.iastate.edu/amesforester/vol78/iss1/18>

This Article is brought to you for free and open access by the Journals at Iowa State University Digital Repository. It has been accepted for inclusion in Ames Forester by an authorized editor of Iowa State University Digital Repository. For more information, please contact digirep@iastate.edu.

CHRISTMAS TREE PLANTATION

The Forestry Club Christmas tree plantation was very demanding on the time, and the bodies, of those who helped in this past years' activities. The Club worked very hard to reach the goals we set for the plantation. These goals were to replenish our stock of firewood, and clear more ground to expand the tree planting area.

The plantation was established six years ago with two basic objectives in mind. First; to supply trees for our annual Christmas tree sales, and second; to generate funding for many Forestry Club activities. This funding is received through the sale of firewood.

We were able to rebuild our supply of firewood with fifteen loads of unsplit wood donated by the local power company and the Iowa State Physical Plant. After two solid days of hauling and splitting our firewood supply is up to twenty-two loads. Our land-clearing effort also helped to rebuild our firewood supply, and will allow us to plant another

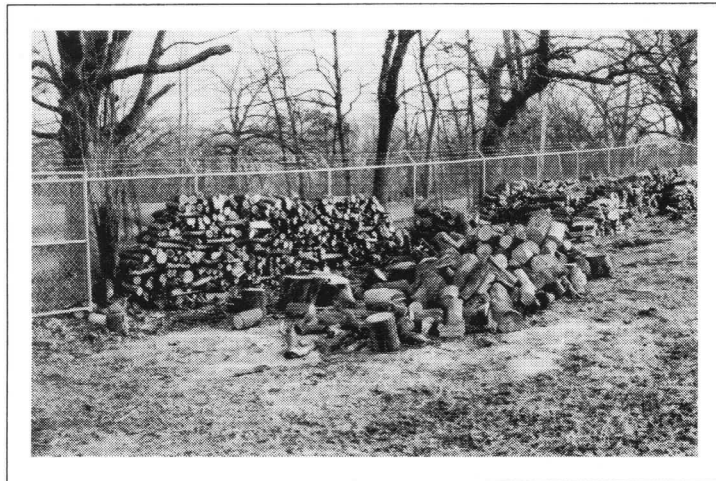
one-third acre to Scotch and white pine. We managed to sell three loads of firewood this past year.

Forestry Club efforts on the plantation will continue throughout the spring semester of 1991. Projects that need to be carried out this spring include chipping the accumulated wood residue, controlling weeds in the area to be planted, and finally, to plant the area that has been cleared.

Marty Schneider



The Christmas tree plantation



Next Year's firewood supply