

Jan 1st, 12:00 AM

Eternal Dress

Tenz Jayson Araja
Ryerson University

Follow this and additional works at: https://lib.dr.iastate.edu/itaa_proceedings



Part of the [Fashion Design Commons](#)

Araja, Tenz Jayson, "Eternal Dress" (2013). *International Textile and Apparel Association (ITAA) Annual Conference Proceedings*. 63.
https://lib.dr.iastate.edu/itaa_proceedings/2013/design/63

This Event is brought to you for free and open access by the Conferences and Symposia at Iowa State University Digital Repository. It has been accepted for inclusion in International Textile and Apparel Association (ITAA) Annual Conference Proceedings by an authorized administrator of Iowa State University Digital Repository. For more information, please contact digirep@iastate.edu.

Eternal Dress

Renz Jayson Araja, Ryerson University, Canada

Keywords: architectural, femininity, fringe, eveningwear

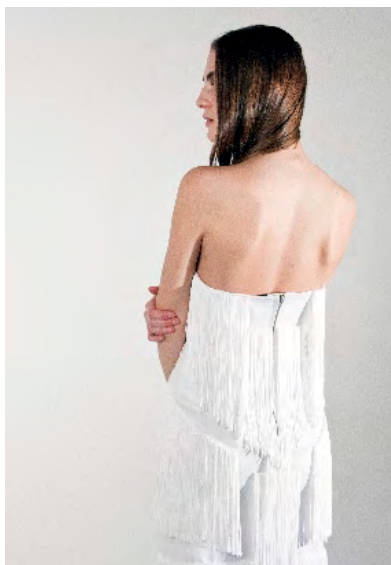
Purpose of the Design:

The design intent was to create custom made eveningwear through experimentation with the use of fringe.

Design Process:

As a child, my exposure to fashion was derived from watching an animated television show called "Sailor Moon." One pivotal memory includes a scene where Sailor Moon transforms into Princess Serenity wearing a white tiered empire dress with puff sleeves and angel wings. I was captivated

by the fantasy of the show and the glamour it entailed. This speaks volumes with regards to the simplicity and sophistication of the design, as well as its classic beauty appeal. This design includes an extended bustier with a crystal pleated polyester chiffon skirt with two slits at the front. Multiple layers of fringe were positioned and stitched to the bustier creating an architectural design aesthetic.



Technique:

Flat pattern drafting was used to create this garment. Princess lines and a boning foundation created the necessary support in the bust area. Two layers of 12" polyester fringe were stitched at various positions along the bustier. Layers of fringe were then hand cut to create an architectural focal point. 1/8" crystal pleated polyester chiffon was added along the hem of the bustier to mimic the fall of the fringe as well as to unify the overall aesthetic of the dress and the trim used.

Materials Used:

dress self - 70% polyester, 30% satin, contrast - 100% polyester chiffon, trims - 100% polyester fringe