

Jan 1st, 12:00 AM

Maharani

Mani Jassal
Ryerson University

Follow this and additional works at: https://lib.dr.iastate.edu/itaa_proceedings



Part of the [Fashion Design Commons](#)

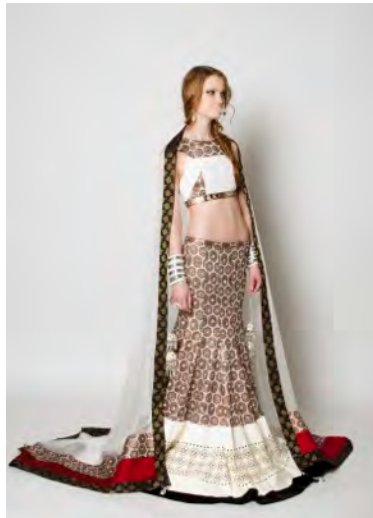
Jassal, Mani, "Maharani" (2013). *International Textile and Apparel Association (ITAA) Annual Conference Proceedings*. 88.
https://lib.dr.iastate.edu/itaa_proceedings/2013/design/88

This Event is brought to you for free and open access by the Conferences and Symposia at Iowa State University Digital Repository. It has been accepted for inclusion in International Textile and Apparel Association (ITAA) Annual Conference Proceedings by an authorized administrator of Iowa State University Digital Repository. For more information, please contact digirep@iastate.edu.

O c j c t e p k

Mani Jassal, Ryerson University, Canada

Keywords: Indian, bridal, non-traditional, laser cutting



Purpose of the Design: The design objective was to create non-traditional, contemporary South Asian bridal wear for a bride that wants to take risks and be unique on her wedding day, through the use of unconventional/innovative materials like laser cut leather.

Design Process: The inspiration for this outfit came from the architecture of the Taj Mahal. The colours, the wall murals, and the symbolism of the Taj Mahal are incorporated into this outfit. The bride's dress is typically enshrined by many of the traditions involved in South Asian weddings. However, new designs may take inspiration from long-established wedding ensembles and at the same time push the boundaries of tradition to offer brides alternative fabric, color and silhouette. This design is modern, regal and elegant and satisfies the needs of the daring bride.

Technique: This outfit was created using flat pattern drafting. The bodice incorporates two different fabrics, cream dupionni silk and brocade whose circular motifs were hand embellished with sequins along the neckline yoke. The 12 gore mermaid skirt features a focal band of cream colored lamb skin leather which was laser cut with circular motifs. Motifs were inspired by marble inlaid patterns in the Taj Mahal, sketches were refined using Adobe Illustrator software and then arranged to create a symmetrical template for laser cutting. The hem was trimmed with a bias cut velvet band for further emphasis. A silk chiffon scarf completes the design, it includes a sequin embellished brocade border. There are sequins hand sewn into the actual chiffon fabric of the scarf in a grid like set up. The border of the chiffon scarf was folded in half and then hemmed by hand for a more luxurious touch.



Materials Used: Dupionni Silk, Lamb Skin (laser cut), Silk Velvet, Brocade, Silk Chiffon, Polyester Lining