

Reliability of Cut Mark Identification:

Analysis of Accuracy of Tool Type Identification

Conducted and Analyzed by:  
Sydney Dighton & Whitney Graves

# Introduction

*Daubert v. Merrell Dow  
Pharmaceuticals*

Tool Types

Admissability

Prior Research

# Materials & Methods

Procurement

Process

Cleaning

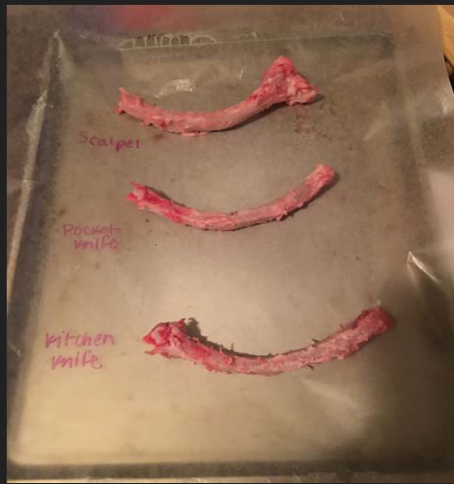
Analysis



Phase 1



Phase 2

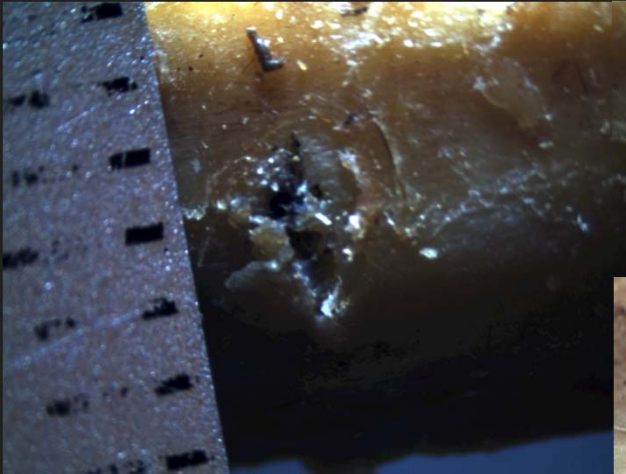


# Results

Examination

Identification of Tool Type

Validity



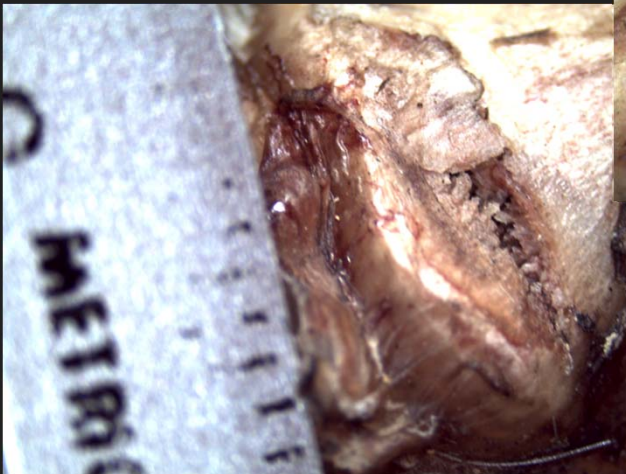
Pocket Knife -  
Rib



Machete -  
Ankle



Ax - Ulna/Radius



Kitchen Knife -  
Ulna/Radius



Machete -  
Femur

Overall

Possible Drawbacks &  
Limitations

Conclusion

Questions?



# References

- Bonney, H. (2014). An investigation of the use of discriminant analysis for the classification of blade edge type from cut marks made by metal and bamboo blades. *Am. J. Phys. Anthropol. American Journal of Physical Anthropology*, 154(4), 575-584. doi:10.1002/ajpa.22558
- Bonte, W. (1975). Tool Marks in Bones and Cartilage. *Journal of Forensic Sciences J. Forensic Sci.*, 20(2), 315-325. doi:10.1520/jfs10278j
- Boschin, F., & Crezzini, J. (2011). Morphometrical Analysis on Cut Marks Using a 3D Digital Microscope. *International Journal of Osteoarchaeology Int. J. Osteoarchaeol.*, 22(5), 549-562. doi:10.1002/oa.1272
- Byers, S.N. (2002). *Introduction to forensic anthropology*. Allyn & Bacon, Boston, MA.
- Byers, S.N. (2008). *Introduction to forensic anthropology*. Boston: Pearson Education.
- Daubert, et al. v. Merrell Dow Pharmaceuticals, Inc., <https://supreme.justia.com/cases/federal/us/509/579/case.pdf> (October, 1992).
- Feldman, A. (2015). From trauma to trial: Proposing new methods for examining the variability of sharp force trauma on bone. The faculty and department of anthropology, San Jose, CA
- Humphrey, J.H. & Hutchinson, D.L. (2001). Macroscopic characteristics of hacking trauma. *Journal of Forensic Sciences*, 46, 228-233.
- Kooi, R. J., & Fairgrieve, S. I. (2012). SEM and Stereomicroscopic Analysis of Cut Marks in Fresh and Burned Bone. *J Forensic Sci Journal of Forensic Sciences*, 58(2), 452-458. doi:10.1111/1556-4029.12050
- Love, J., Derrick, S., Wiersema, J., & Peters, C. (2012). Validation of Tool Mark Analysis of Cut Costal Cartilage. *Journal of Forensic Sciences*, 57(2), 306-311.
- Lynn, K. & Fairgrieve, S. (2009). Microscopic indicators of axe and hatchet trauma in fleshed and defleshed mammalian long bones. *Journal of Forensic Sciences*, 54, 793-797.
- McComb, N. W. (n.d.). *Preparing skeletons using dermestid beetles*. Southampton, MA: Connecticut Valley Biological Supply.
- Pearce, A, et al. (2007). Animal models for implant biomaterial research in bone: A review. *European Cells and Materials*, 13, 1-10.

## References (Continued)

- Puentes, K., & Cardoso, H. (2013). Reliability of cut mark analysis in human costal cartilage: The effects of blade penetration angle and intra- and inter-individual differences. *Forensic Science International*, 231(1-3), 244-248. doi:10.1016/j.forsciint.2013.05.015
- Tersigni-Tarrant, M. and Shirley, N. (2013). *Forensic anthropology: an introduction*. Boca Raton, FL: CRC Press.
- Thompson, T.J.U. & Inglis, J. (2009). *Differentiation of serrated and nonserrated blades from stab marks in bone*.
- Tucker, B.K., Hutchinson, D.L., Gilliland, M.F.G., Charles, T.M., Daniel, H.J., & Wolfe, L.D. (2001). Microscopic characteristics of hacking trauma. *Journal of Forensic Sciences*, 46, 234-240.
- Shaw, K. et al. (2011). A method for studying knife tool marks on bone. *Journal of Forensic Sciences*, 56, 967-971
- Sitiene, R., Zakaras, A., Pauliukevicius, A., & Kisielius, G. (2007). Morphologic, experimental-comparative investigation as an identification of the injuring instrument method. *Forensic Science International*, 167, 255-260.
- Ulijaszek, S. J., & Kerr, D. A. (1999). Anthropometric measurement error and the assessment of nutritional status. *British Journal of Nutrition Br J Nutr*, 82(03), 165. doi:10.1017/s0007114599001348