


3-2-2017

Distance Learning Student Survey 2016: Summary

Susan A. Vega Garcia

Iowa State University, savega@iastate.edu

Follow this and additional works at: http://lib.dr.iastate.edu/refinst_conf

 Part of the [Educational Assessment, Evaluation, and Research Commons](#), and the [Library and Information Science Commons](#)

The complete bibliographic information for this item can be found at http://lib.dr.iastate.edu/refinst_conf/32. For information on how to cite this item, please visit <http://lib.dr.iastate.edu/howtocite.html>.

This Report is brought to you for free and open access by the Reference and Instruction at Iowa State University Digital Repository. It has been accepted for inclusion in Reference and Instruction Conference Papers, Posters and Presentations by an authorized administrator of Iowa State University Digital Repository. For more information, please contact digirep@iastate.edu.

Distance Learning Student Survey 2016: Summary

Abstract

The following is a report which was presented to the Reference & Instruction Division of Parks Library summarizing the 2016 Distance Learning Committee's Distance Learning Student Survey findings.

Disciplines

Educational Assessment, Evaluation, and Research | Library and Information Science

IOWA STATE UNIVERSITY

ISU Library

Distance Learning Student Survey 2016

Summary

Survey Goals & Background

Goals:

- Ongoing ISU DL Student Library needs assessment
- Assess student awareness/use of ISU Library resources & services
- Measure any change since 2011 & 2013 surveys

Background:

- IRB approved research
- Re-run of 2013 Student Survey with a few new questions
- Administered March 22-April 22, 2016

Results at a Glance

Demographics

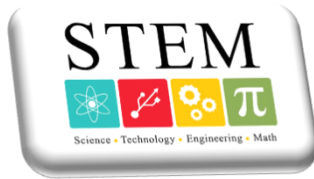
	2011	2013	2016
# Respondents *	353	405	467
Response Rate	31%	34%	35%
% 100+ Miles away	61%	64%	66%
% Grad Students	73%	75%	79%

* Usable responses (over age 18)

Library Resource Use Important to my DL Success

	2011	2013	2016
Very important	36%	42%	43%
Important	34%	33%	34%
Not much/Not at all	23%	26%	23%

New Question: Major Area of Study



60% Stem Major



30% SSH Major



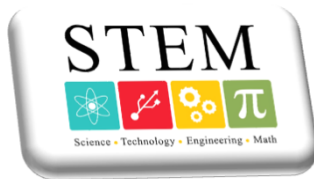
N=462

STEM	%
Ag & Life Sci	30%
Math CompSci	9%
PhysSci & Engin	21%
VetMed	.04%

SSH	%
Arts & Design	1%
BusEcon	6%
Humanities	4%
SocSci & Educ	19%
NA/Undecided	10%

Clip art – Clker.com; US Embassy Prague; UVM Bored

“Library resource use not important to my DL course success”



73% Stem Major



37% SSH Major



N=107

STEM	%
Ag & Life Sci	23%
Math CompSci	18%
PhysSci & Engin	23%
VetMed	9%

SSH	%
Arts & Design	0%
BusEcon	18%
Humanities	7%
SocSci & Educ	7%
NA/Undecided	5%

Clip art – Clker.com; US Embassy Prague; UVM Bored

Three Views on DL Student Success

Library Resource Use Important to DL Success = 77% agree

N=467



Research Skills....

“Able to find what I need...”

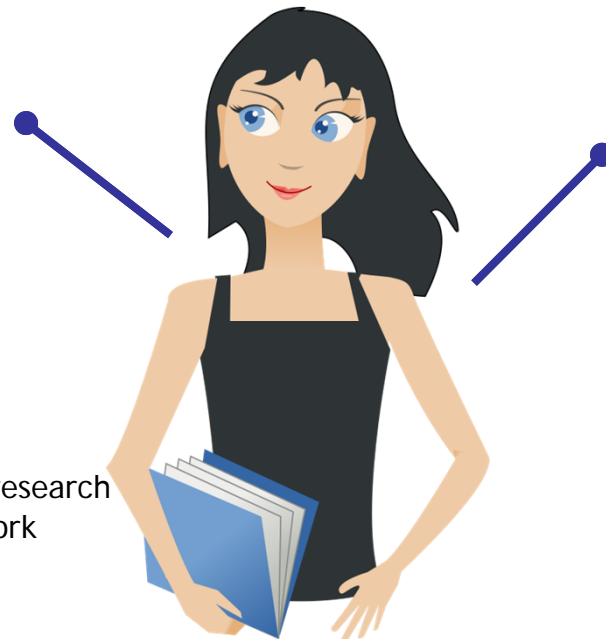
ALWAYS: 15%

ALMOST ALWAYS : 53%

NOT VERY OFTEN-NEVER: 8%

NOT RELEVANT: 25% library research not relevant to my DL coursework

N = 462



ISU Library Website....

“My success in finding what I need...”

VERY GOOD: 24%

GOOD : 45%

POOR-VERY POOR: 7%

NOT RELEVANT: 24% library research not relevant to my DL coursework

N = 462

Clip art – Clker.com

IOWA STATE UNIVERSITY

ISU Library

“Used & Liked” vs Ease of Use

Comparing 2013 and 2016 responses

2013 “Used & liked”

I ♥ the Lib

- ♥ 75% agree ISU Library is important to their DL success
- ♥ QUICK SEARCH
41% used & liked
- ♥ Article Indexes & Databases
44% used & liked
- ♥ EJOURNALS & ARTICLES
49% used & liked
- ♥ LIBRARY WEBSITE
54% used & liked

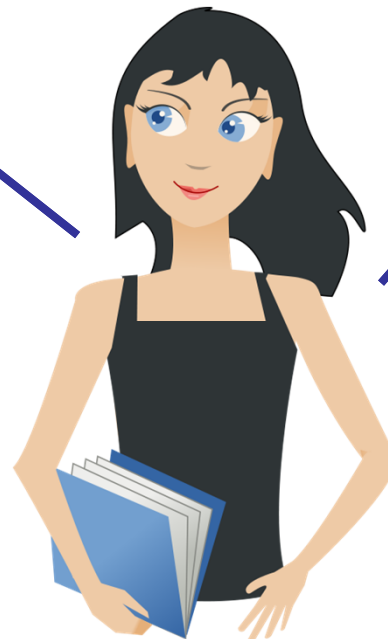
2013 N = 405; varies by Question

2016 “Ease of use”

👍 Easy to use to find what I need

- 👍 77% agree ISU Library is important to their DL success
- 👍 QUICK SEARCH
62% Easy to Very Easy
- 👍 Article Indexes & Databases
57% Easy to Very Easy
- 👍 EJOURNALS & ARTICLES
61% Easy to Very Easy
- 👍 LIBRARY WEBSITE
64% Easy to Very Easy

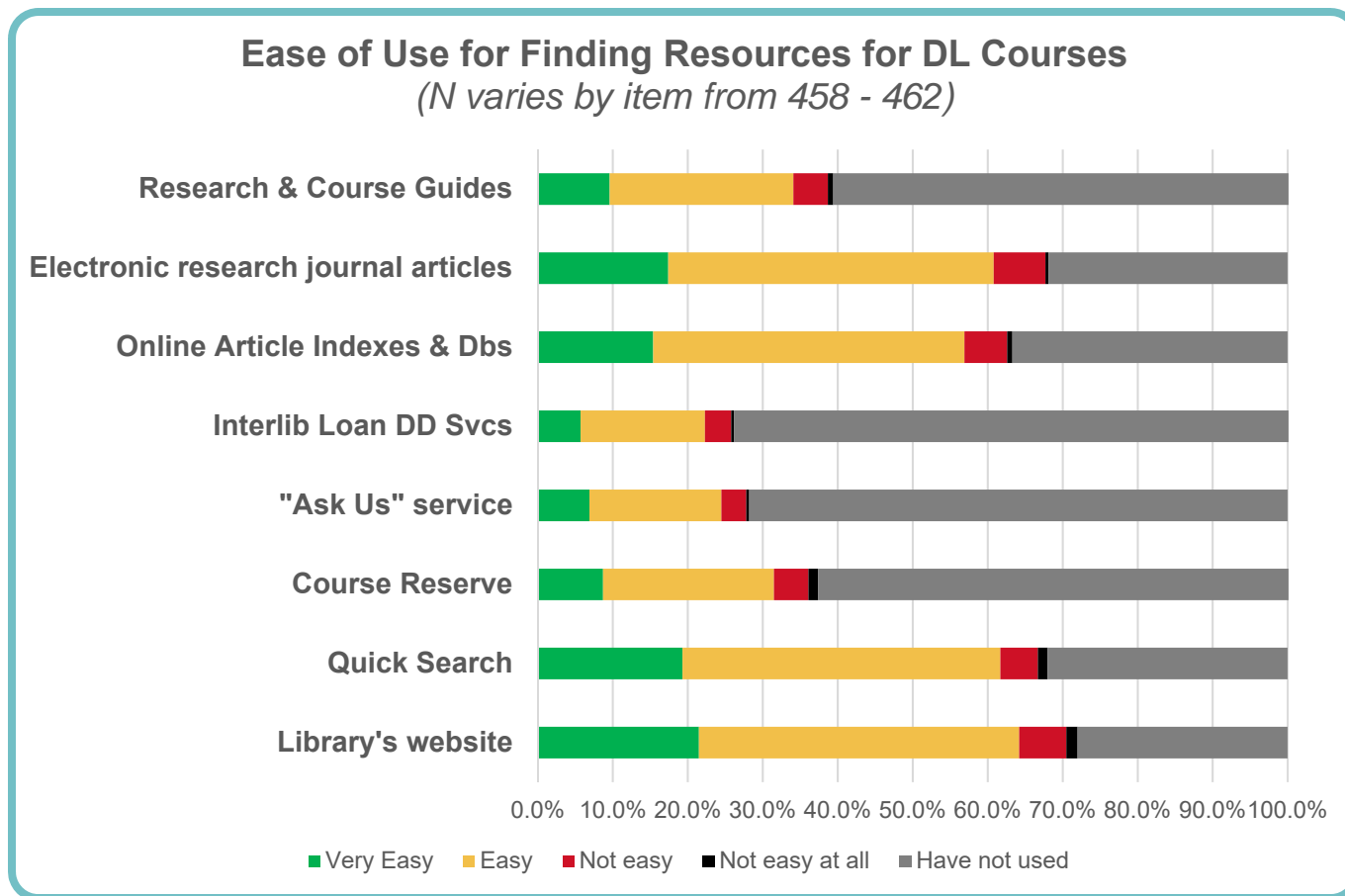
2016 N = 458 - 462; varies by Question



Clip art - Clker.com

2016 Survey Respondents on “Ease of Use”

“How easy was it for me to use to find what I needed for my DL coursework”



5 Areas of Difficulty

LIBRARY WEBSITE

"Library website is terrible. Hard to navigate."

FINDING ARTICLES

"...it is challenging to find my way to the correct library site to find my journal articles."

LOGIN DIFFERENT

"I don't like that ISU Library requires a different password from ISU Net ID"



Image: freepik.com

NEED INSTRUCTION

"Very difficult to figure out how and what to search for and searching capability doesn't seem flexible..."

LOSING USERS

"It is ok but sometimes Google is more relevant sadly even for scholarly articles."

GRAD STUDENTS MADE ALL THESE COMMENTS

2016 DL Student Survey IRB

DL Committee & IRB

Linda Anderson

Dan Coffey

Jesse Garrison

Rano Marupova

Dawn Mick

Susan Vega García, PI