

1946

Add a Touch of Christmas

Ann Rozeboom
Iowa State College

Follow this and additional works at: <http://lib.dr.iastate.edu/homemaker>



Part of the [Home Economics Commons](#)

Recommended Citation

Rozeboom, Ann (1946) "Add a Touch of Christmas," *The Iowa Homemaker*: Vol. 26 : No. 5 , Article 7.
Available at: <http://lib.dr.iastate.edu/homemaker/vol26/iss5/7>

This Article is brought to you for free and open access by the Student Publications at Iowa State University Digital Repository. It has been accepted for inclusion in *The Iowa Homemaker* by an authorized editor of Iowa State University Digital Repository. For more information, please contact digirep@iastate.edu.

Add a Touch of Christmas

to empty mantles or table centers with a pot of glue, a bit of ingenuity and any decorating material from cellophane to pipe cleaners.

Here women studying household equipment have demonstrated how to add sparkle to Christmas party decorations. Students, under the direction of Dr. Louise J. Peet, head of the Department of Household Equipment, have worked with the application of decorative home lighting as a special problem.

The ideas used by the students are for the most part original. Borrowed themes from Christmas cards and holiday displays in store windows are also used.

Top rating places for accessories in making these decorations are won by tinsel, angel hair, colored paper, artificial snow, cotton and evergreen branches. Christmas tree lights are popular.

Christmas decorations do not have a monopoly on the women's attention. Some have made unusual centerpieces for five and ten pound parties as their projects.

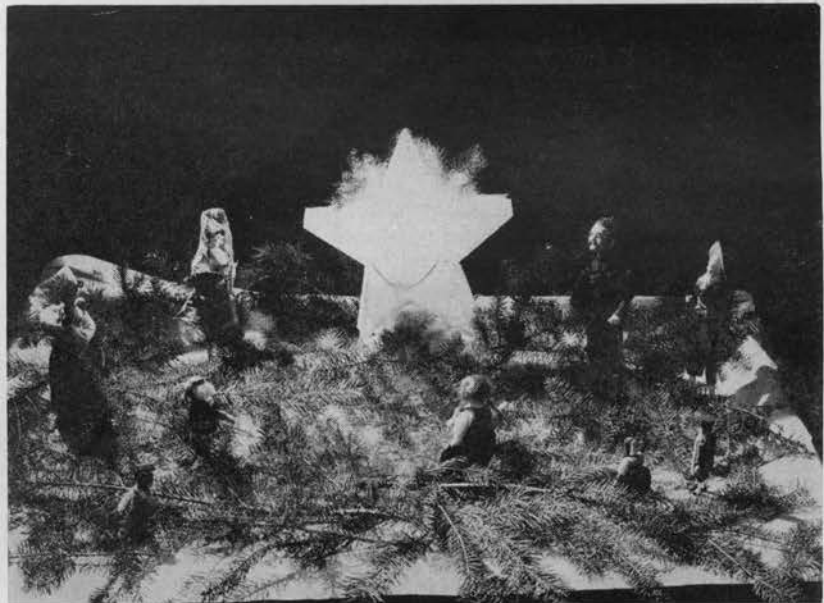
You don't have to be a household equipment major to turn out these models. Ingenuity is what counts.

Below: This child's Christmas tea set is lighted by colored candles and bulbs under the glasses which fit through the silver-covered box.



Above: A striking mantlepiece is an illuminated snowman made from glass rose bowls of graduated sizes. Light bulbs glow through the soap flakes suds snow.

Below: This table covering displays dolls of foreign lands. Inside the white tissue paper star which represents the star of peace shines an electric light bulb.



Below: Angels made from cone-shaped parchment paper, pipe cleaners and artificial snow and trees from paper cones with cellophane icicles add a Christmas touch.

